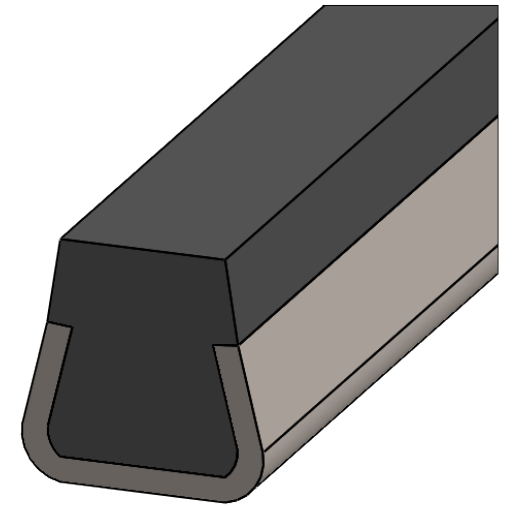
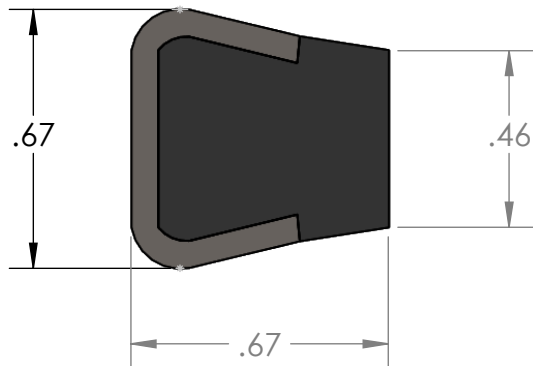


B

A



B

A

**PROPRIETARY AND CONFIDENTIAL**  
THE INFORMATION CONTAINED IN THIS  
DRAWING IS THE SOLE PROPERTY OF  
MASON PLASTICS COMPANY. ANY  
REPRODUCTION IN PART OR AS A WHOLE  
WITHOUT THE WRITTEN PERMISSION OF  
MASON PLASTICS COMPANY IS  
PROHIBITED.

		UNLESS OTHERWISE SPECIFIED:		NAME	DATE	TITLE: <b>Flat Mason Solid Lubricant Rail</b>		
		DIMENSIONS ARE IN INCHES TOLERANCES: $\pm 0.01$	DRAWN	Charles Kirk	9/21/18			
		INTERPRET GEOMETRIC TOLERANCING PER:	CHECKED					
		MATERIAL	ENG APPR.					
		Wax Filled UHMW-PE/ 304 Stainless Steel	MFG APPR.					
			Q.A.			COMMENTS: Meets FDA21CFR 177.1520 Recommended for Food Industry Products		
NEXT ASSY	USED ON	FINISH				SIZE <b>A</b>	DWG. NO. MPSSFMS10	REV
APPLICATION		DO NOT SCALE DRAWING				SCALE: 1:8	WEIGHT:	SHEET 1 OF 1

2

1