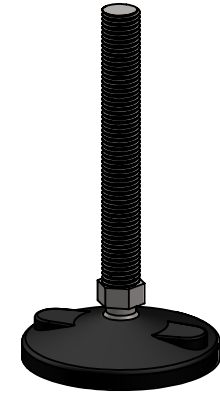
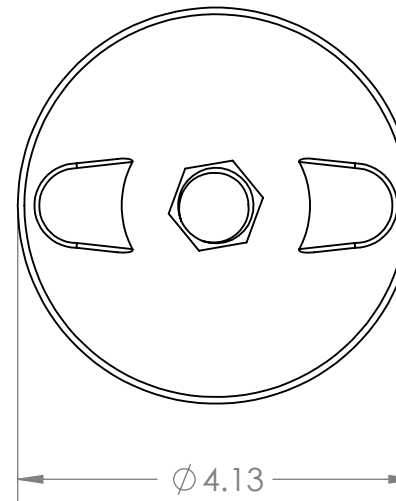
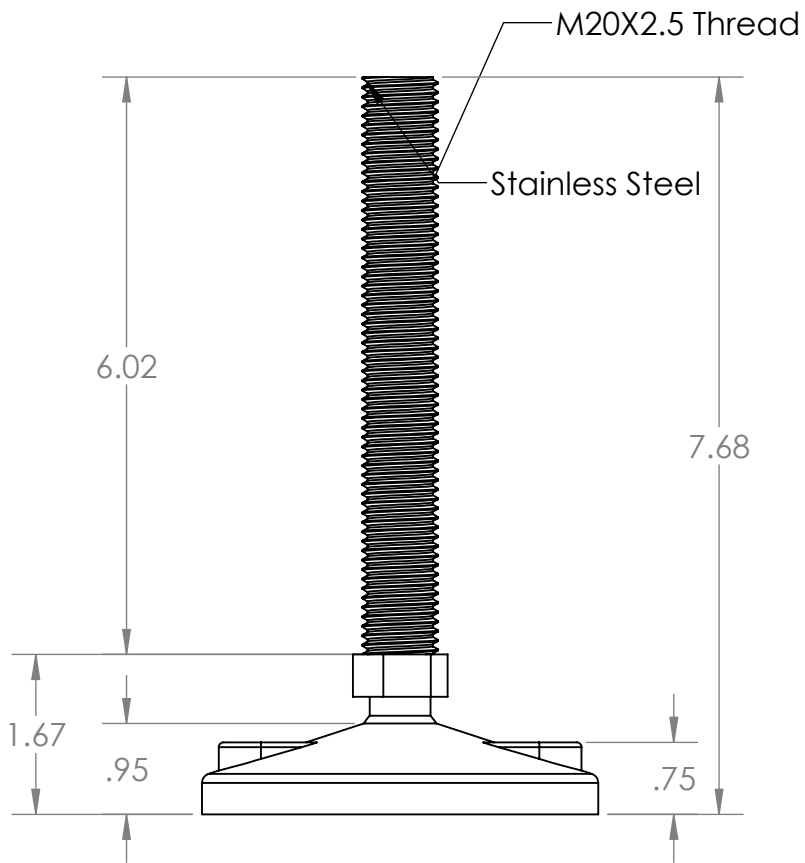


B



B

A

<div>PROPRIETARY AND CONFIDENTIAL</div> <div>THE INFORMATION CONTAINED IN THIS DRAWING IS THE SOLE PROPERTY OF MASON PLASTICS COMPANY. ANY REPRODUCTION IN PART OR AS A WHOLE WITHOUT THE WRITTEN PERMISSION OF MASON PLASTICS COMPANY IS PROHIBITED.</div>			UNLESS OTHERWISE SPECIFIED: DIMENSIONS ARE IN INCHES TOLERANCES: ±0.01	DRAWN	Charles Kirk	11/1/18	TITLE: 4" Adjustable Leveler with Hex Metal Ball M20X2.5 Threaded Rod for 7.68" Length				
				CHECKED							
				ENG APPR.							
				MFG APPR.							
			INTERPRET GEOMETRIC TOLERANCING PER:	Q.A.			COMMENTS:				
			MATERIAL								
NEXT ASSY	USED ON	FINISH									
APPLICATION		DO NOT SCALE DRAWING		SCALE: 1:4				WEIGHT:		SHEET 1 OF 1	

A

2

1