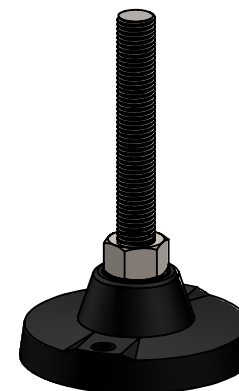
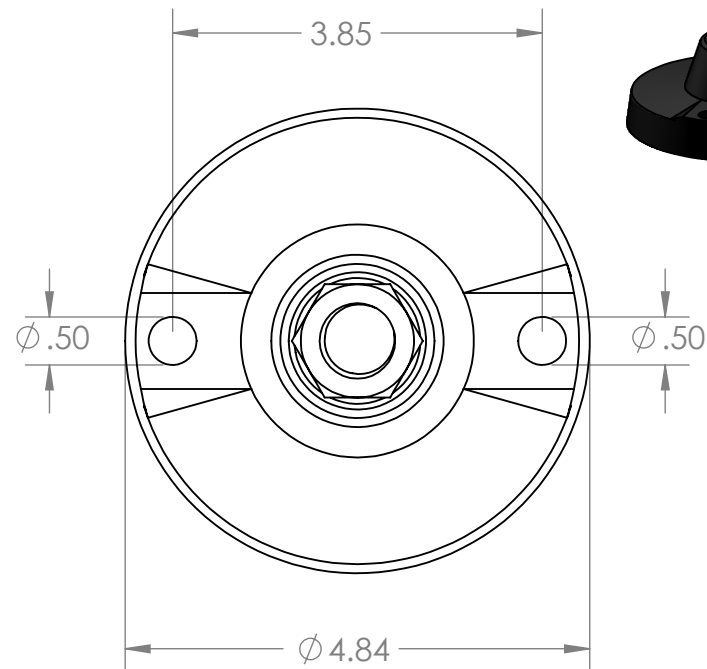
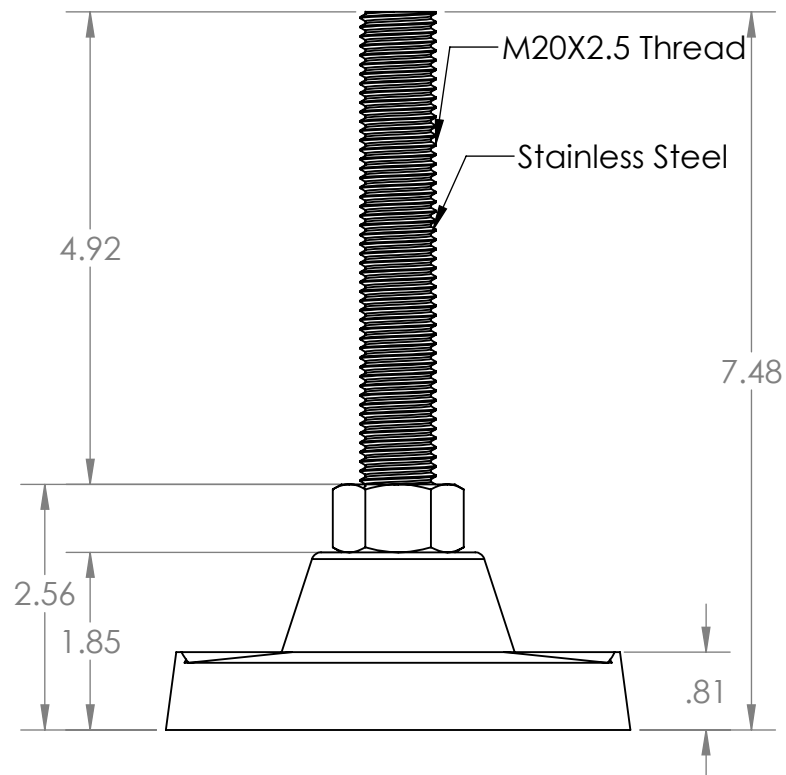


B



B

A

A

**PROPRIETARY AND CONFIDENTIAL**  
THE INFORMATION CONTAINED IN THIS DRAWING IS THE SOLE PROPERTY OF MASON PLASTICS COMPANY. ANY REPRODUCTION IN PART OR AS A WHOLE WITHOUT THE WRITTEN PERMISSION OF MASON PLASTICS COMPANY IS PROHIBITED.

		UNLESS OTHERWISE SPECIFIED:		NAME	DATE	TITLE:  5" Leveler with Metal Stem M20X2.5 Threaded Rod for 7.48" Length			
		DIMENSIONS ARE IN INCHES TOLERANCES: ±0.01	DRAWN	Charles Kirk	11/9/18				
			CHECKED						
			ENG APPR.						
			MFG APPR.						
		INTERPRET GEOMETRIC TOLERANCING PER:	Q.A.			SIZE   DWG. NO.   REV  A            MPH7057M20S			
		MATERIAL	COMMENTS:						
		FINISH							
NEXT ASSY	USED ON								
APPLICATION		DO NOT SCALE DRAWING				SCALE: 1:4   WEIGHT:   SHEET 1 OF 1			

2

1