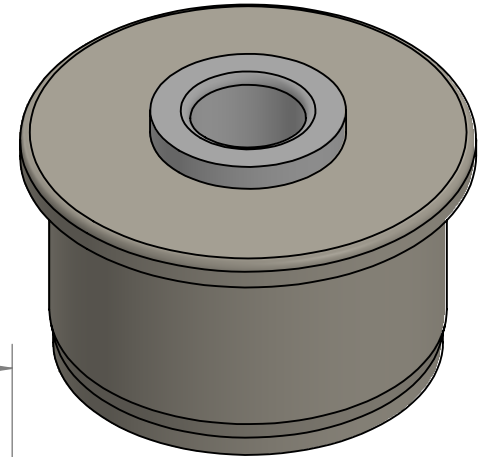
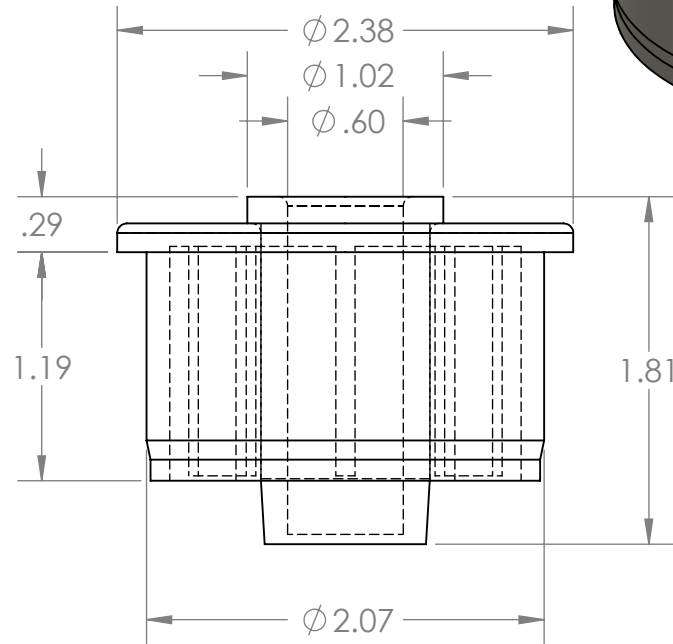
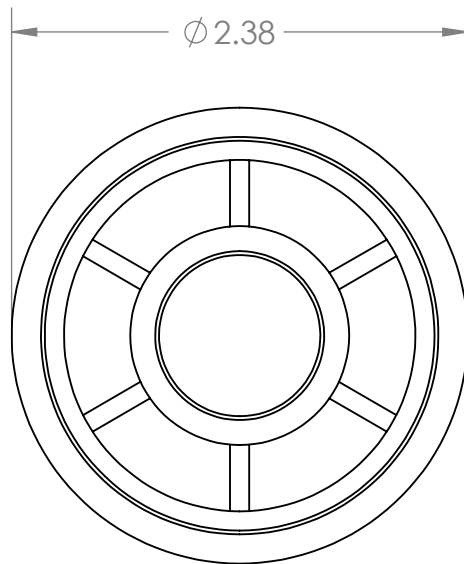


B



B

A

PROPRIETARY AND CONFIDENTIAL
THE INFORMATION CONTAINED IN THIS DRAWING IS THE SOLE PROPERTY OF MASON PLASTICS COMPANY. ANY REPRODUCTION IN PART OR AS A WHOLE WITHOUT THE WRITTEN PERMISSION OF MASON PLASTICS COMPANY IS PROHIBITED.

		UNLESS OTHERWISE SPECIFIED:		NAME	DATE	TITLE: ABS Roll End Bearing for 2" SCH 40 PVC Pipe						
		DIMENSIONS ARE IN INCHES TOLERANCES: ±0.01	DRAWN	Charles Kirk	11/29/18							
			CHECKED									
			ENG APPR.									
			MFG APPR.									
		INTERPRET GEOMETRIC TOLERANCING PER:	Q.A.			SIZE A				DWG. NO. MPA2040916WUBB		REV
		MATERIAL	COMMENTS: Natural ABS Roller White UHMW Insert for 9/16" Diameter Shaft Blind Bore									
		FINISH										
NEXT ASSY	USED ON					SCALE: 1:1		WEIGHT:		SHEET 1 OF 1		
APPLICATION		DO NOT SCALE DRAWING										

PROPRIETARY AND CONFIDENTIAL
THE INFORMATION CONTAINED IN THIS DRAWING IS THE SOLE PROPERTY OF MASON PLASTICS COMPANY. ANY REPRODUCTION IN PART OR AS A WHOLE WITHOUT THE WRITTEN PERMISSION OF MASON PLASTICS COMPANY IS PROHIBITED.

A

2

1