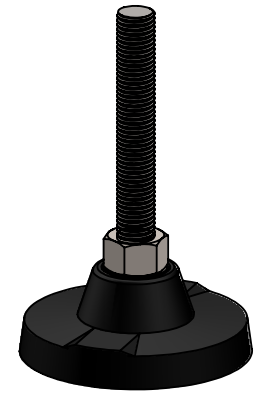
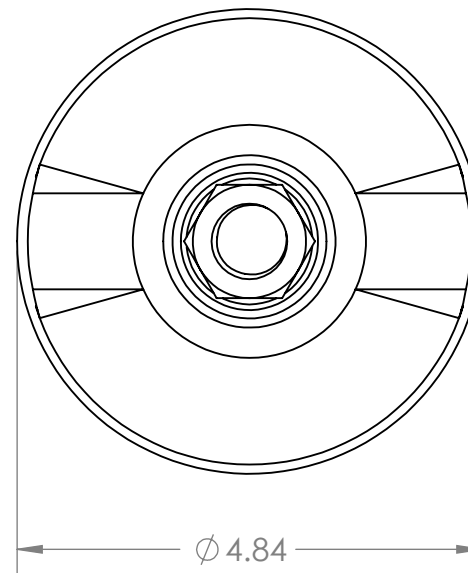
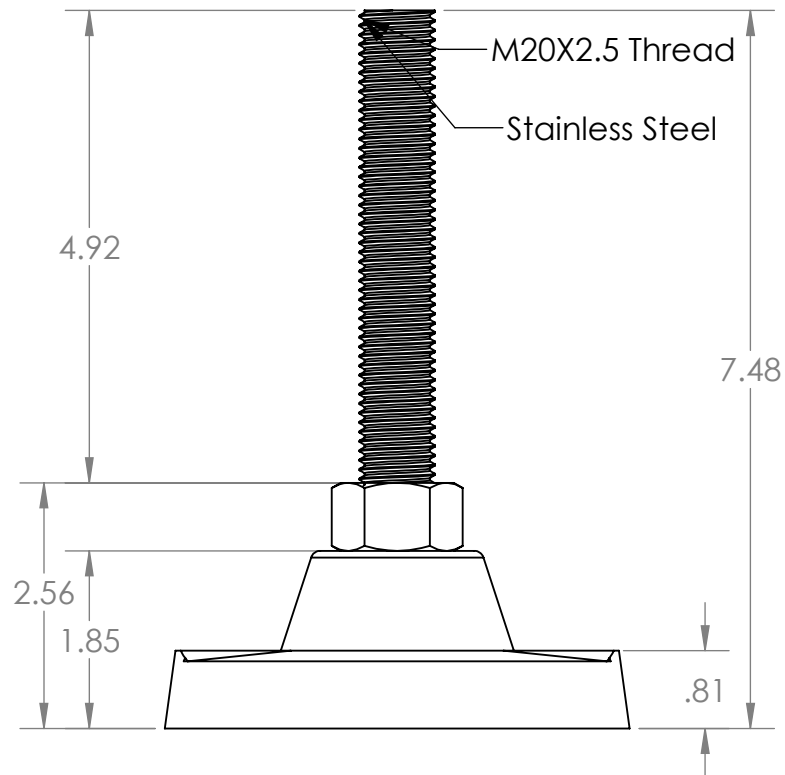


B



B

A

A

PROPRIETARY AND CONFIDENTIAL
THE INFORMATION CONTAINED IN THIS DRAWING IS THE SOLE PROPERTY OF MASON PLASTICS COMPANY. ANY REPRODUCTION IN PART OR AS A WHOLE WITHOUT THE WRITTEN PERMISSION OF MASON PLASTICS COMPANY IS PROHIBITED.

		UNLESS OTHERWISE SPECIFIED:		NAME	DATE	TITLE: 5" Leveler with Metal Stem M20X2.5 Threaded Rod for 7.48" Length			
		DIMENSIONS ARE IN INCHES TOLERANCES: ±0.01	DRAWN	Charles Kirk	11/9/18				
			CHECKED						
			ENG APPR.						
			MFG APPR.						
		INTERPRET GEOMETRIC TOLERANCING PER:	Q.A.			COMMENTS:			
		MATERIAL							
		FINISH				SIZE A	DWG. NO. MP7057M20S		REV
NEXT ASSY	USED ON					SCALE: 1:4	WEIGHT:	SHEET 1 OF 1	
APPLICATION		DO NOT SCALE DRAWING							

2

1