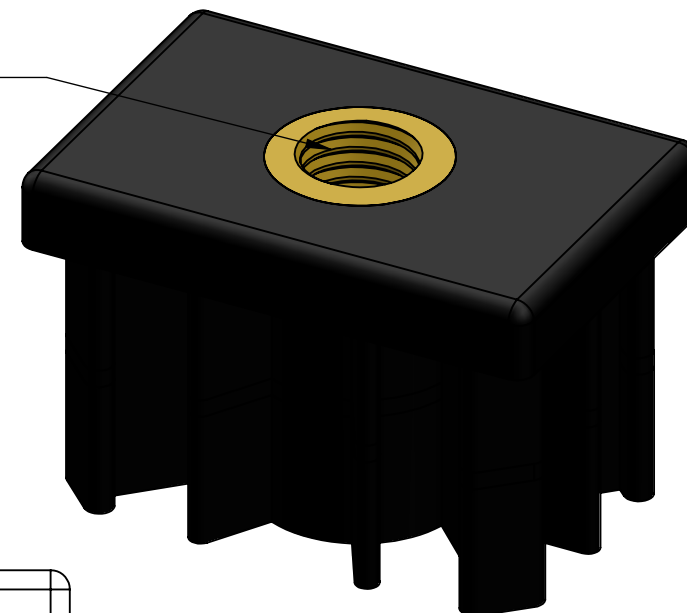
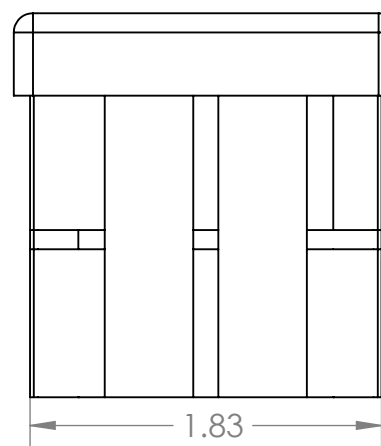


1



B



A

|   |             |         |   |           |              |          |  |  |  |                       |     |  |
|---|-------------|---------|---|-----------|--------------|----------|--|--|--|-----------------------|-----|--|
| <div>PROPRIETARY AND CONFIDENTIAL</div> <div>THE INFORMATION CONTAINED IN THIS DRAWING IS THE SOLE PROPERTY OF MASON PLASTICS COMPANY. ANY REPRODUCTION IN PART OR AS A WHOLE WITHOUT THE WRITTEN PERMISSION OF MASON PLASTICS COMPANY IS PROHIBITED.</div> |             |         | UNLESS OTHERWISE SPECIFIED:                   |           | NAME         | DATE     | TITLE:<br><br>2"x3" Threaded Tube End<br>for 5/8-11 Threaded Rod |  |  |                       |     |  |
|   |             |         | DIMENSIONS ARE IN INCHES<br>TOLERANCES: ±0.01 | DRAWN     | Charles Kirk | 11/13/18 |  |  |  |                       |     |  |
|   |             |         |   | CHECKED   |              |          |  |  |  |                       |     |  |
|   |             |         |   | ENG APPR. |              |          |  |  |  |                       |     |  |
|   |             |         |   | MFG APPR. |              |          |  |  |  |                       |     |  |
|   |             |         | INTERPRET GEOMETRIC<br>TOLERANCING PER:       | Q.A.      |              |          | SIZE<br><b>A</b>   |  |  |                       |     |  |
|   |             |         | MATERIAL<br>PA Type 6 GF 30%                  | COMMENTS: |              |          |  |  |  | DWG. NO.<br>MP6052358 | REV |  |
|   | NEXT ASSY   | USED ON | FINISH  |           |              |          |  |  |  | SCALE: 1:1            |     |  |
|   | APPLICATION |         | DO NOT SCALE DRAWING                          |           |              |          |  |  |  |                       |     |  |