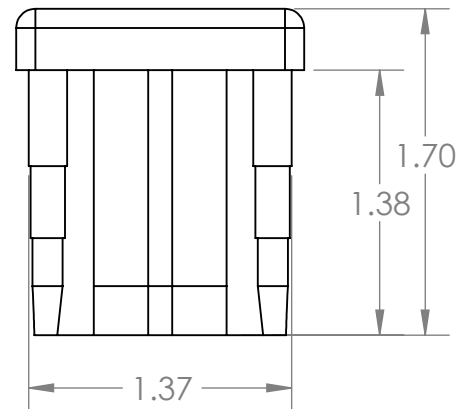
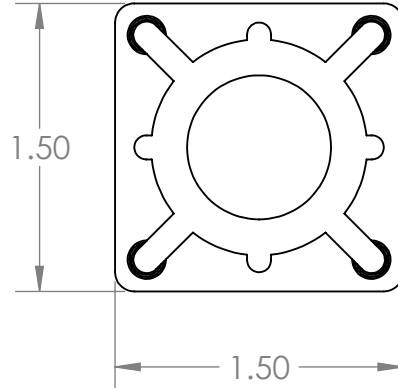
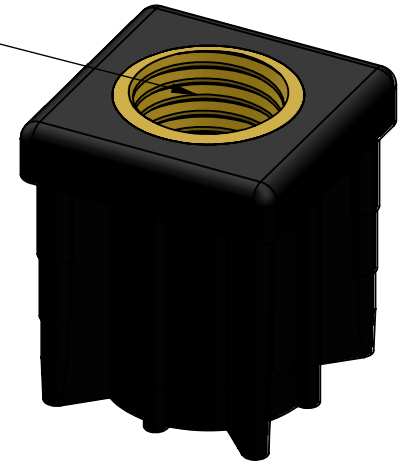


B

B

20mm Thread

**PROPRIETARY AND CONFIDENTIAL**

THE INFORMATION CONTAINED IN THIS DRAWING IS THE SOLE PROPERTY OF MASON PLASTICS COMPANY. ANY REPRODUCTION IN PART OR AS A WHOLE WITHOUT THE WRITTEN PERMISSION OF MASON PLASTICS COMPANY IS PROHIBITED.

NEXT ASSY

USED ON

APPLICATION

UNLESS OTHERWISE SPECIFIED:

DIMENSIONS ARE IN INCHES
TOLERANCES: ± 0.01

INTERPRET GEOMETRIC
TOLERANCING PER:

MATERIAL
PA Type 6 GF 30%

FINISH

DO NOT SCALE DRAWING

NAME

DATE

DRAWN

Charles Kirk

11/13/18

CHECKED

ENG APPR.

MFG APPR.

Q.A.

COMMENTS:

TITLE:

1.5"X1.5" 16 Gauge Threaded
Tube End for 20mm
Threaded Rod

SIZE

A

DWG. NO.

MP6011620M

REV

SCALE: 1:1

WEIGHT:

SHEET 1 OF 1

A

2

1