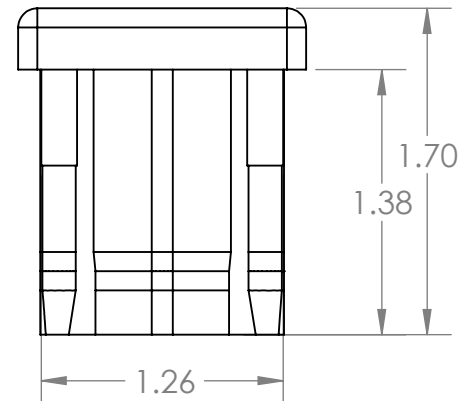
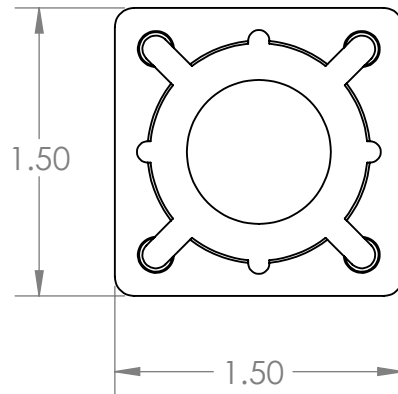
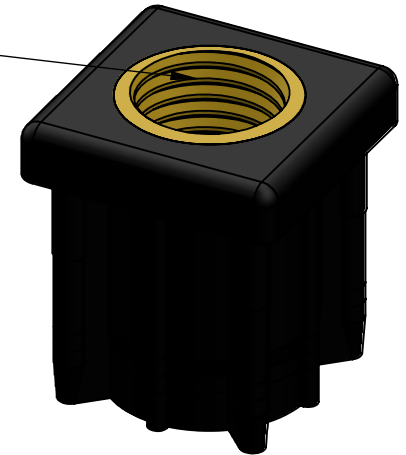


B



20mm Thread



B

A

A

PROPRIETARY AND CONFIDENTIAL
 THE INFORMATION CONTAINED IN THIS
 DRAWING IS THE SOLE PROPERTY OF
 MASON PLASTICS COMPANY. ANY
 REPRODUCTION IN PART OR AS A WHOLE
 WITHOUT THE WRITTEN PERMISSION OF
 MASON PLASTICS COMPANY IS
 PROHIBITED.

		UNLESS OTHERWISE SPECIFIED:		NAME	DATE	TITLE: 1.5"X1.5" 11 Gauge Threaded Tube End for 20mm Threaded Rod					
		DIMENSIONS ARE IN INCHES TOLERANCES: ±0.01	DRAWN	Charles Kirk	11/13/18						
			CHECKED								
			ENG APPR.								
			MFG APPR.								
		INTERPRET GEOMETRIC TOLERANCING PER:	Q.A.			SIZE A DWG. NO. MP6011120M REV					
		MATERIAL PA Type 6 GF 30%	COMMENTS:								
		FINISH									
NEXT ASSY	USED ON										
APPLICATION		DO NOT SCALE DRAWING		SCALE: 1:1				WEIGHT:		SHEET 1 OF 1	

2

1