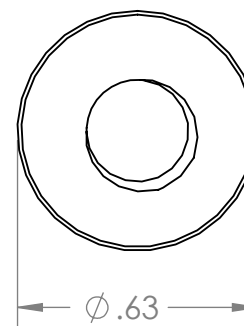
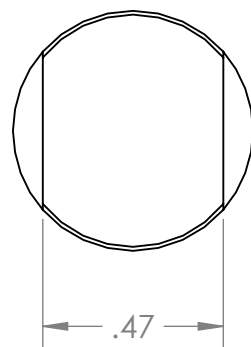
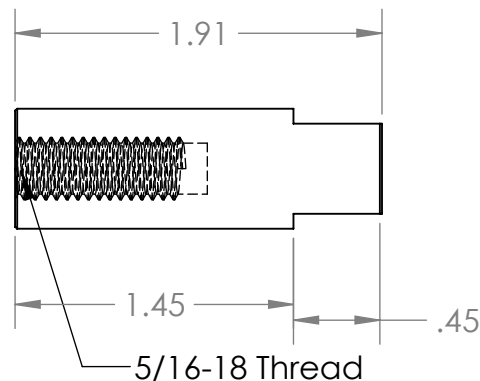


2

1

B

B



A

A

**PROPRIETARY AND CONFIDENTIAL**  
THE INFORMATION CONTAINED IN THIS  
DRAWING IS THE SOLE PROPERTY OF  
MASON PLASTICS COMPANY. ANY  
REPRODUCTION IN PART OR AS A WHOLE  
WITHOUT THE WRITTEN PERMISSION OF  
MASON PLASTICS COMPANY IS  
PROHIBITED.

		UNLESS OTHERWISE SPECIFIED:		NAME	DATE	TITLE: <div>5/8" Adjusting Rod 5/16"-18 Threaded End</div>		
		DIMENSIONS ARE IN INCHES TOLERANCES: ±0.01	DRAWN	Charles Kirk	1/11/19			
			CHECKED					
			ENG APPR.					
			MFG APPR.					
		INTERPRET GEOMETRIC TOLERANCING PER:	Q.A.			COMMENTS:		
		MATERIAL						
		FINISH						
		DO NOT SCALE DRAWING						
NEXT ASSY	USED ON					SIZE <b>A</b>	DWG. NO. MP5322516	REV
APPLICATION						SCALE: 1:8	WEIGHT:	SHEET 1 OF 1