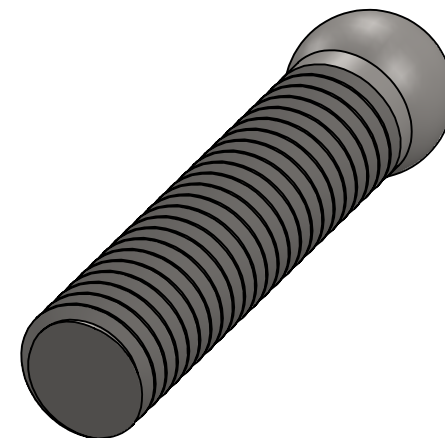


2

1

B

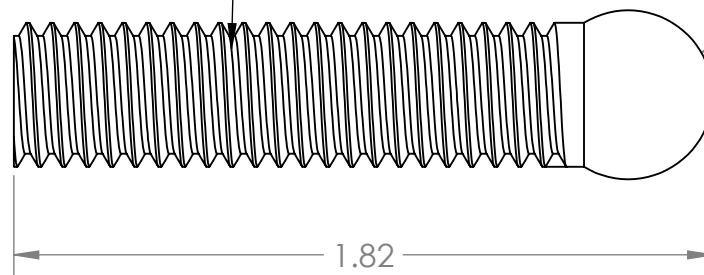
B



3/8-16 Thread

R.22

1.82



A

A

PROPRIETARY AND CONFIDENTIAL
THE INFORMATION CONTAINED IN THIS
DRAWING IS THE SOLE PROPERTY OF
MASON PLASTICS COMPANY. ANY
REPRODUCTION IN PART OR AS A WHOLE
WITHOUT THE WRITTEN PERMISSION OF
MASON PLASTICS COMPANY IS
PROHIBITED.

| | | | | | | | | |
|-------------|---------|--|------------|--------------|---------|---|---------|--------------|
| | | UNLESS OTHERWISE SPECIFIED: DIMENSIONS ARE IN INCHES TOLERANCES: ±0.01 | | NAME | DATE | TITLE: Stub Shaft with Round Ball | | |
| | | | DRAWN | Charles Kirk | 1/16/19 | | | |
| | | | CHECKED | | | | | |
| | | | ENG APPR. | | | | | |
| | | | MFG APPR. | | | | | |
| | | INTERPRET GEOMETRIC TOLERANCING PER: | Q.A. | | | SIZE DWG. NO. REV A MP500716 | | |
| | | MATERIAL | COMMENTS: | | | | | |
| | | FINISH | | | | | | |
| NEXT ASSY | USED ON | | | | | | | |
| APPLICATION | | DO NOT SCALE DRAWING | SCALE: 2:1 | | | | WEIGHT: | SHEET 1 OF 1 |

2

1