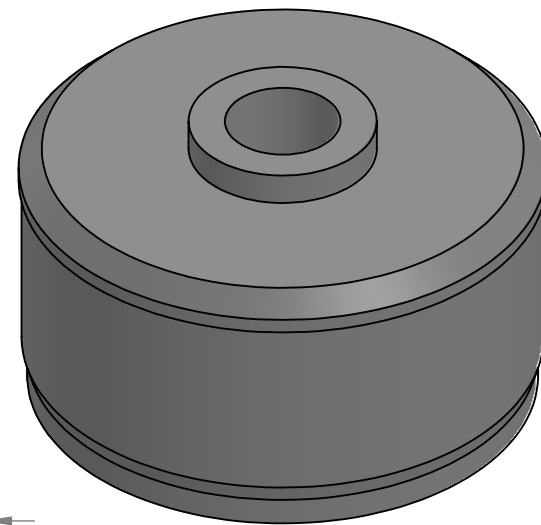
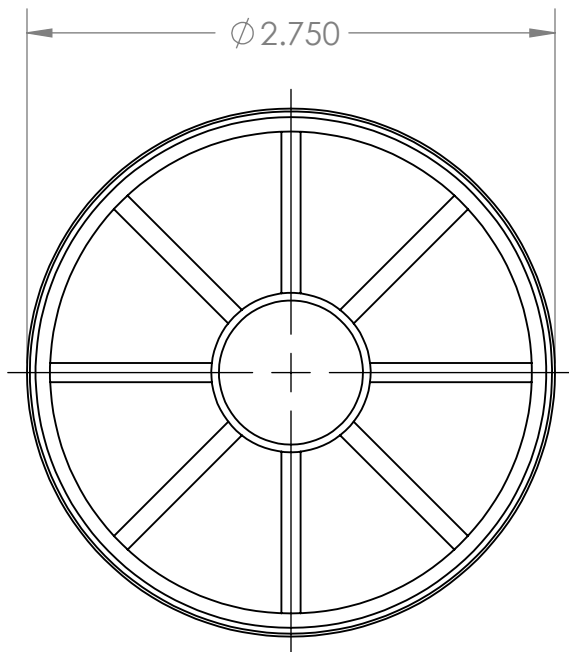
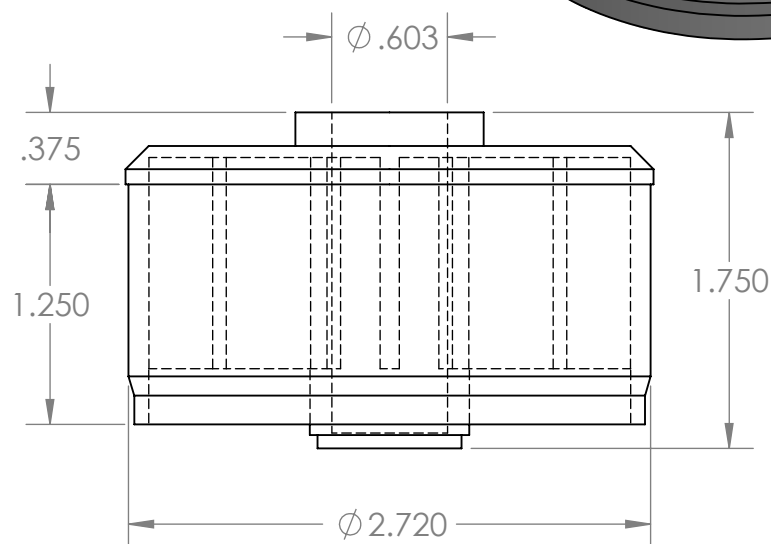


B



B



A

PROPRIETARY AND CONFIDENTIAL
THE INFORMATION CONTAINED IN THIS DRAWING IS THE SOLE PROPERTY OF MASON PLASTICS COMPANY. ANY REPRODUCTION IN PART OR AS A WHOLE WITHOUT THE WRITTEN PERMISSION OF MASON PLASTICS COMPANY IS PROHIBITED.

| | | | | | | | | |
|-------------|--|----------------------------------------------------|-----------|--|--------------|----------|---------------------------------------------------------------------------------------|--|
| | | UNLESS OTHERWISE SPECIFIED: | | | NAME | DATE | TITLE: Roll End Bearing for 2 3/4" 16 GA for 9/16" Shaft Diameter Blind Bore | |
| | | DIMENSIONS ARE IN INCHES TOLERANCES: ± 0.01 | DRAWN | | Charles Kirk | 11/21/18 | | |
| | | | CHECKED | | | | | |
| | | | ENG APPR. | | | | | |
| | | | MFG APPR. | | | | | |
| | | INTERPRET GEOMETRIC TOLERANCING PER: | Q.A. | | | | SIZE | |
| | | MATERIAL | COMMENTS: | | | | | |
| | | FINISH | | | | | DWG. NO. | |
| NEXT ASSY | | USED ON | | | | | MP2750916BB | |
| APPLICATION | | DO NOT SCALE DRAWING | | | | | REV | |
| | | | | | | | SCALE: 1:1 | |
| | | | | | | | WEIGHT: | |
| | | | | | | | SHEET 1 OF 1 | |

A

2

1