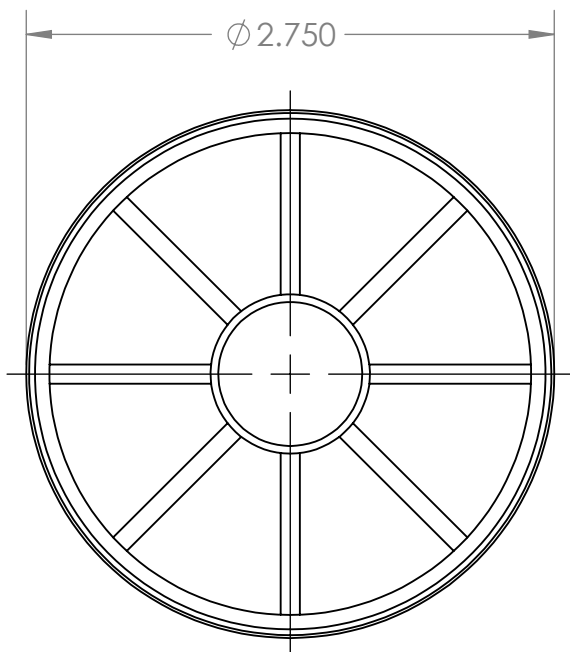
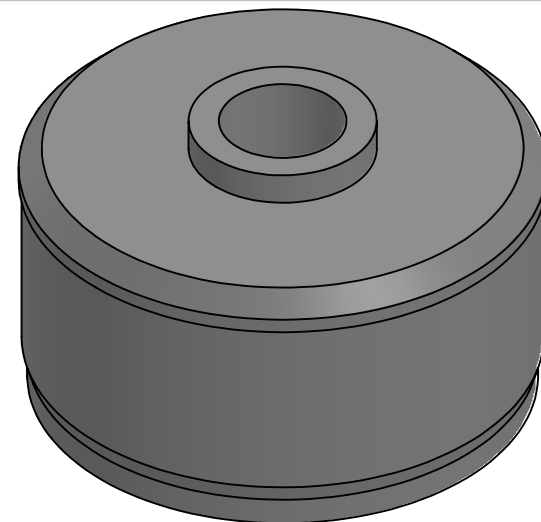


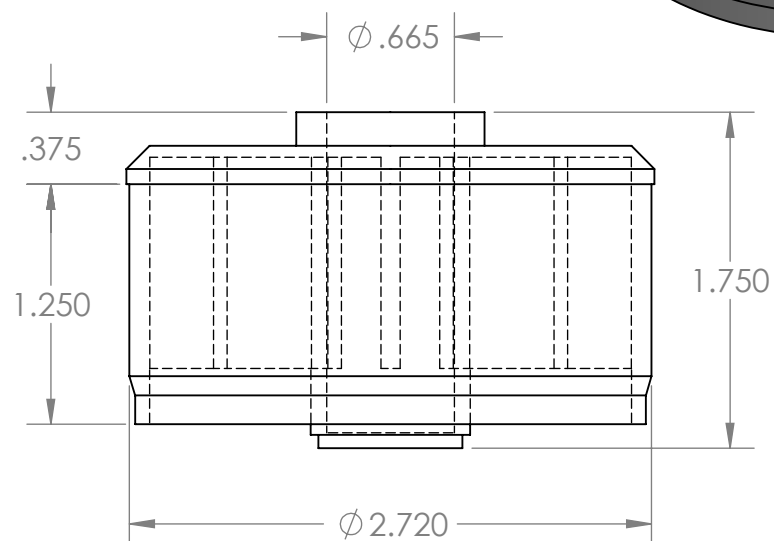
B



1



B



A

PROPRIETARY AND CONFIDENTIAL
THE INFORMATION CONTAINED IN THIS DRAWING IS THE SOLE PROPERTY OF MASON PLASTICS COMPANY. ANY REPRODUCTION IN PART OR AS A WHOLE WITHOUT THE WRITTEN PERMISSION OF MASON PLASTICS COMPANY IS PROHIBITED.

		UNLESS OTHERWISE SPECIFIED: DIMENSIONS ARE IN INCHES TOLERANCES: ±0.01		NAME	DATE	TITLE: Roll End Bearing for 2 3/4" 16 GA for 5/8" Shaft Diameter Blind Bore			
			DRAWN	Charles Kirk	11/21/18				
			CHECKED						
			ENG APPR.						
			MFG APPR.						
		INTERPRET GEOMETRIC TOLERANCING PER: MATERIAL	Q.A.			SIZE A			
			COMMENTS:						
NEXT ASSY	USED ON	FINISH				DWG. NO. MP275058BB		REV	
APPLICATION		DO NOT SCALE DRAWING				SCALE: 1:1		WEIGHT:	SHEET 1 OF 1

A

2

1