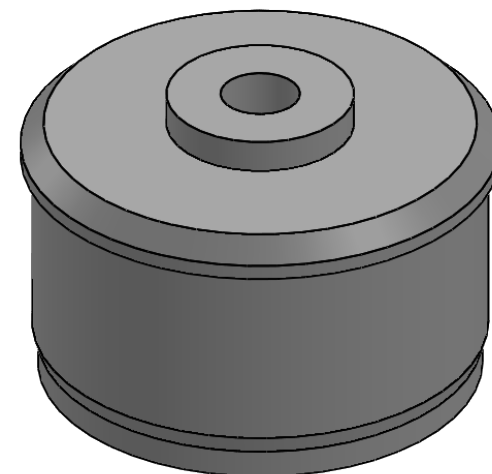
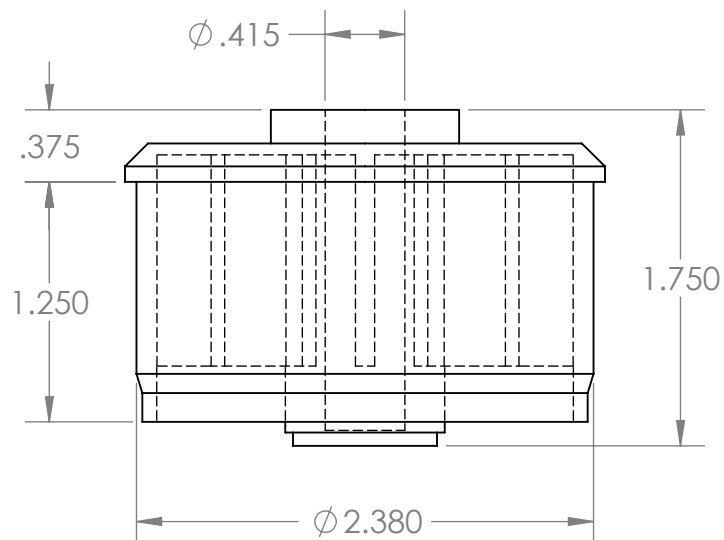
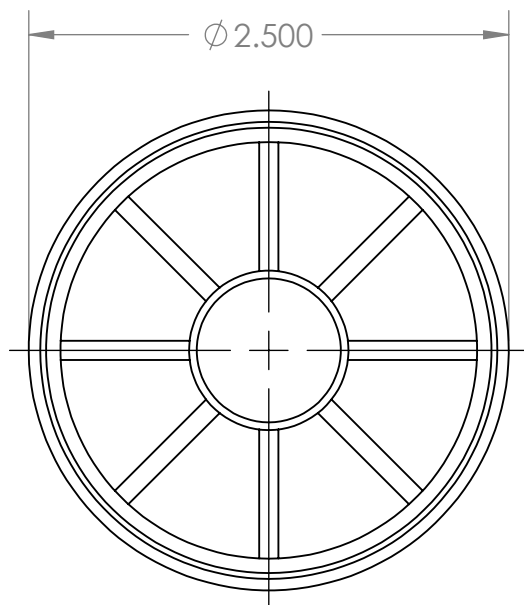


B



B

A

A

PROPRIETARY AND CONFIDENTIAL
THE INFORMATION CONTAINED IN THIS DRAWING IS THE SOLE PROPERTY OF MASON PLASTICS COMPANY. ANY REPRODUCTION IN PART OR AS A WHOLE WITHOUT THE WRITTEN PERMISSION OF MASON PLASTICS COMPANY IS PROHIBITED.

		UNLESS OTHERWISE SPECIFIED: DIMENSIONS ARE IN INCHES TOLERANCES: ±0.01		NAME	DATE	TITLE: Roll End Bearing for 2 1/2" 16 GA for 3/8" Shaft Diameter Blind Bore			
			DRAWN	Charles Kirk	6/17/19				
			CHECKED						
			ENG APPR.						
			MFG APPR.						
		INTERPRET GEOMETRIC TOLERANCING PER: MATERIAL	Q.A.			SIZE A			
			COMMENTS:						
						DWG. NO. MP251638BB		REV	
NEXT ASSY	USED ON	FINISH							
APPLICATION		DO NOT SCALE DRAWING				SCALE: 1:1		WEIGHT:	SHEET 1 OF 1

2

1