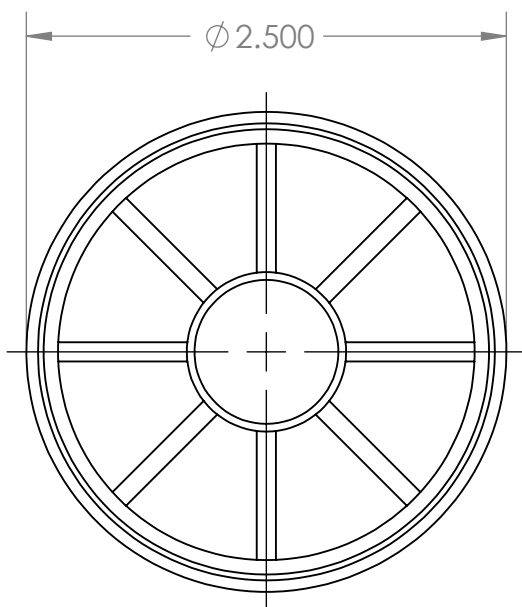
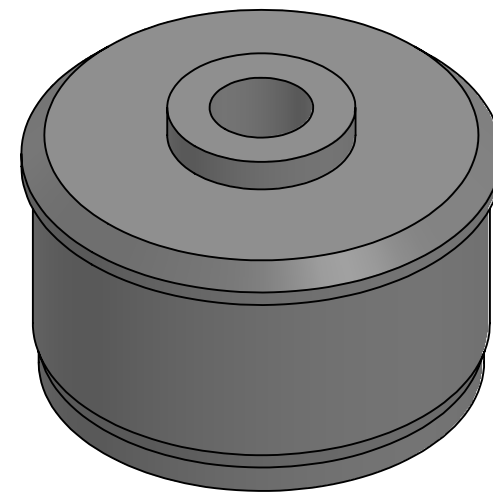


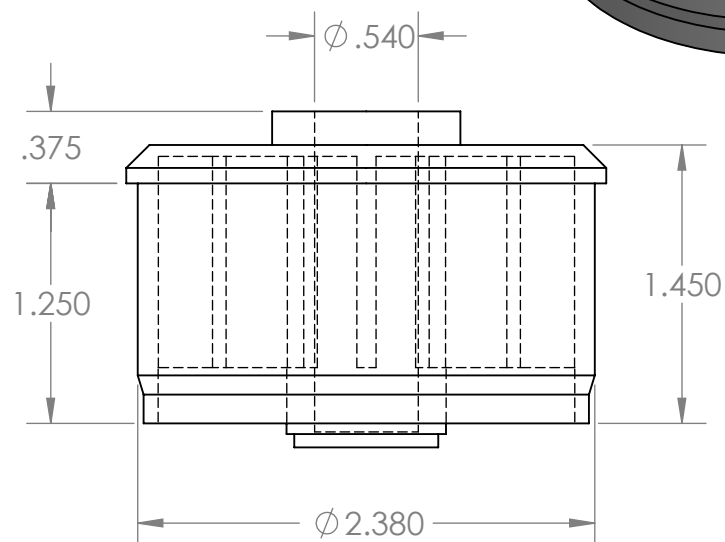
B



1



B



A

PROPRIETARY AND CONFIDENTIAL
THE INFORMATION CONTAINED IN THIS DRAWING IS THE SOLE PROPERTY OF MASON PLASTICS COMPANY. ANY REPRODUCTION IN PART OR AS A WHOLE WITHOUT THE WRITTEN PERMISSION OF MASON PLASTICS COMPANY IS PROHIBITED.

		UNLESS OTHERWISE SPECIFIED:		NAME	DATE	TITLE: Roll End Bearing for 2 1/2" 16 GA for 1/2" Shaft Diameter Blind Bore		
		DIMENSIONS ARE IN INCHES TOLERANCES: ± 0.01	DRAWN	Charles Kirk	11/21/18			
			CHECKED					
			ENG APPR.					
			MFG APPR.					
			Q.A.					
		INTERPRET GEOMETRIC TOLERANCING PER:	COMMENTS:			SIZE	DWG. NO.	REV
		MATERIAL				A	MP251612BB	
	NEXT ASSY	USED ON				SCALE: 1:1	WEIGHT:	SHEET 1 OF 1
	APPLICATION	DO NOT SCALE DRAWING						

A

2

1