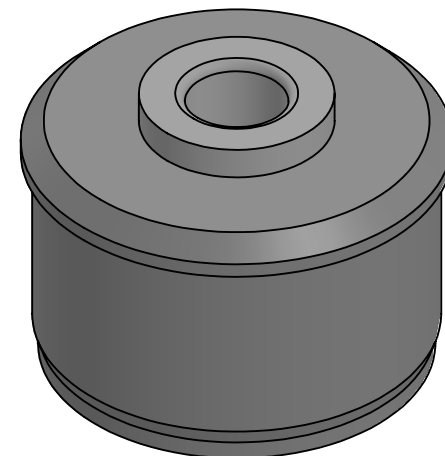
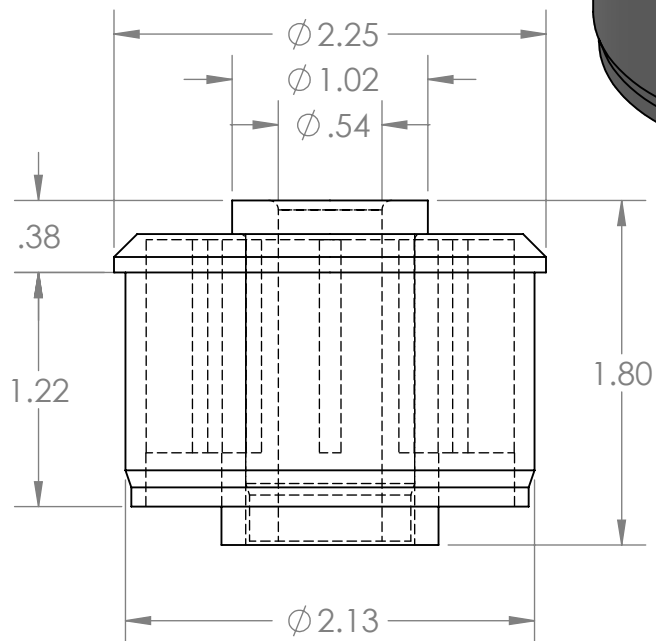
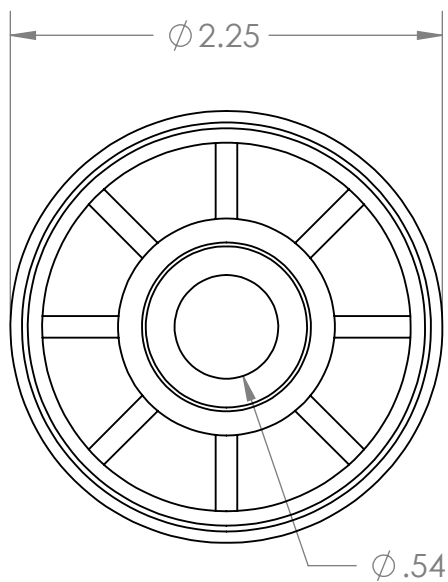


B



B

A

PROPRIETARY AND CONFIDENTIAL
THE INFORMATION CONTAINED IN THIS DRAWING IS THE SOLE PROPERTY OF MASON PLASTICS COMPANY. ANY REPRODUCTION IN PART OR AS A WHOLE WITHOUT THE WRITTEN PERMISSION OF MASON PLASTICS COMPANY IS PROHIBITED.

		UNLESS OTHERWISE SPECIFIED: DIMENSIONS ARE IN INCHES TOLERANCES: ±0.01		NAME	DATE	TITLE: Nylon Roll End for 2 1/4" 16 GA Metal Tubing		
			DRAWN	Charles Kirk	12/5/18			
			CHECKED					
			ENG APPR.					
			MFG APPR.					
		INTERPRET GEOMETRIC TOLERANCING PER:	Q.A.			SIZE A		
		MATERIAL	COMMENTS:					
		FINISH	White UHMW Insert for 1/2" Diameter Axle Through Bore			DWG. NO. MP2216S12TB		REV
NEXT ASSY	USED ON					SCALE: 1:1		WEIGHT:
APPLICATION		DO NOT SCALE DRAWING				SHEET 1 OF 1		

A

2

1