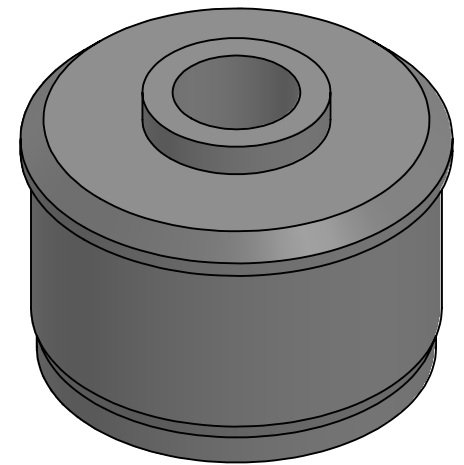
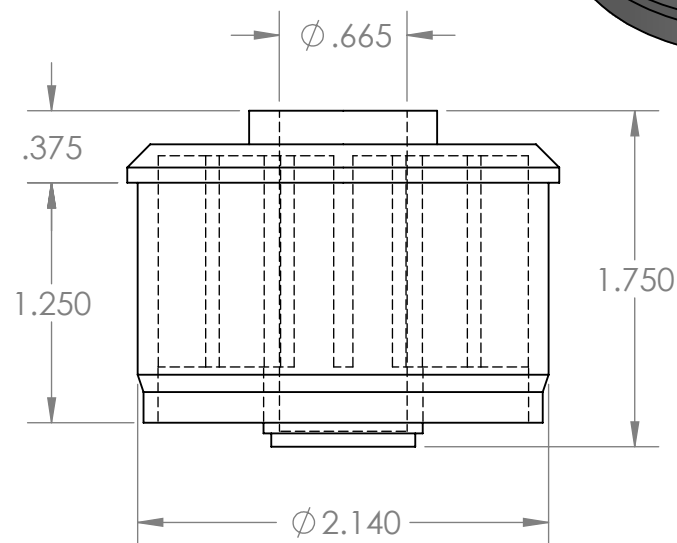
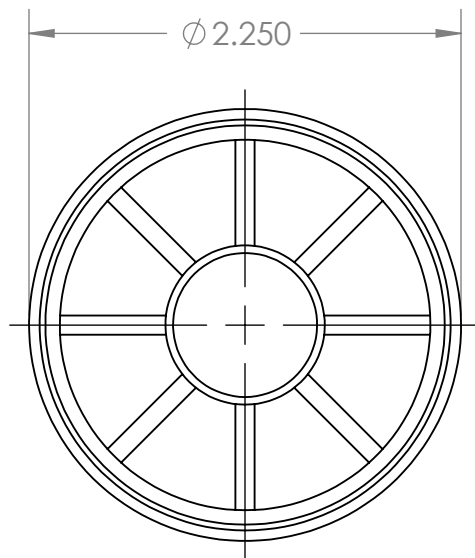


B



B

A

**PROPRIETARY AND CONFIDENTIAL**  
THE INFORMATION CONTAINED IN THIS DRAWING IS THE SOLE PROPERTY OF MASON PLASTICS COMPANY. ANY REPRODUCTION IN PART OR AS A WHOLE WITHOUT THE WRITTEN PERMISSION OF MASON PLASTICS COMPANY IS PROHIBITED.

		UNLESS OTHERWISE SPECIFIED:		NAME	DATE	TITLE: Roll End Bearing for 2 1/4" 16 GA for 5/8" Shaft Diameter Blind Bore				
		DIMENSIONS ARE IN INCHES TOLERANCES: ±0.01	DRAWN	Charles Kirk	11/21/18					
			CHECKED							
			ENG APPR.							
			MFG APPR.							
		INTERPRET GEOMETRIC TOLERANCING PER:	Q.A.			SIZE DWG. NO. REV <b>A</b> MP221658BB				
		MATERIAL	COMMENTS:							
NEXT ASSY	USED ON	FINISH								
APPLICATION		DO NOT SCALE DRAWING	SCALE: 1:1				WEIGHT:		SHEET 1 OF 1	

2

1