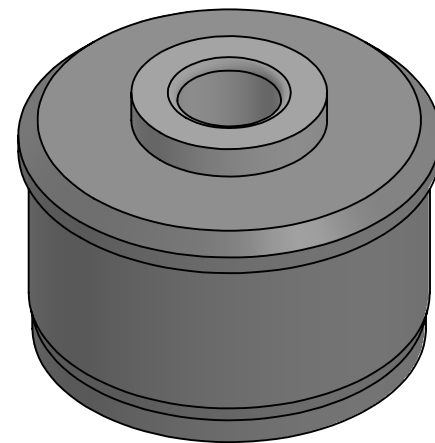
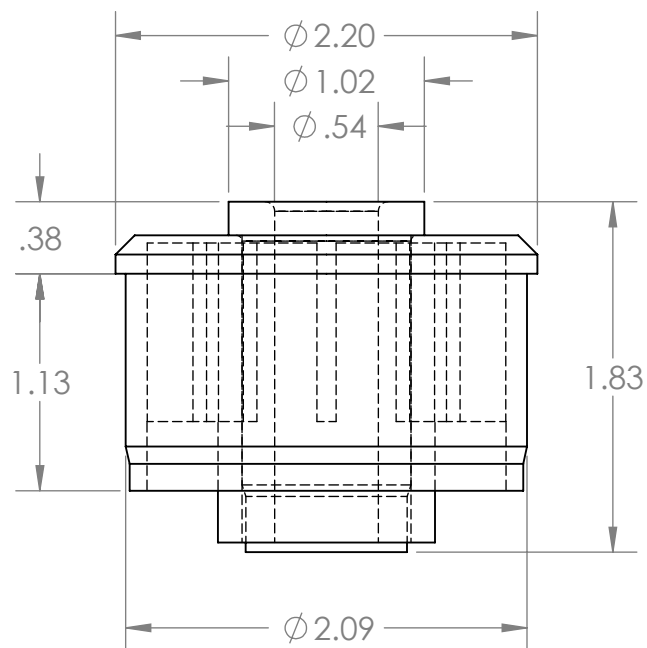
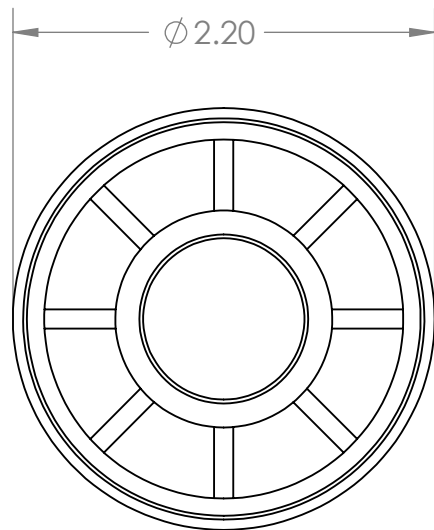


B



B

A

A

PROPRIETARY AND CONFIDENTIAL
 THE INFORMATION CONTAINED IN THIS
 DRAWING IS THE SOLE PROPERTY OF
 MASON PLASTICS COMPANY. ANY
 REPRODUCTION IN PART OR AS A WHOLE
 WITHOUT THE WRITTEN PERMISSION OF
 MASON PLASTICS COMPANY IS
 PROHIBITED.

		UNLESS OTHERWISE SPECIFIED:		NAME	DATE	TITLE: Nylon Roll End for 2" EMT Metal Tubing		
		DIMENSIONS ARE IN INCHES TOLERANCES: ±0.01	DRAWN	Charles Kirk	12/5/18			
			CHECKED					
			ENG APPR.					
			MFG APPR.					
		INTERPRET GEOMETRIC TOLERANCING PER:	Q.A.			SIZE A		
		MATERIAL	COMMENTS: White UHMW Insert for 1/2" Diameter Axle Blind Bore					
		FINISH				DWG. NO. MP2067S12BB		
NEXT ASSY	USED ON		REV					
APPLICATION		DO NOT SCALE DRAWING				SCALE: 1:1		

2

1