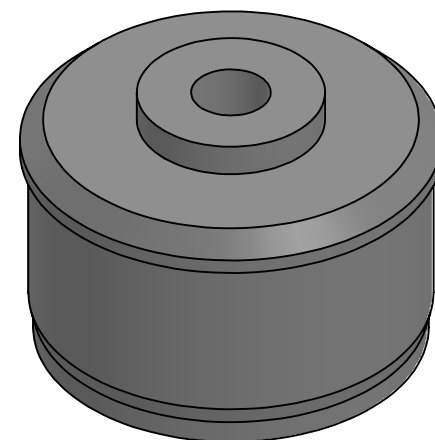
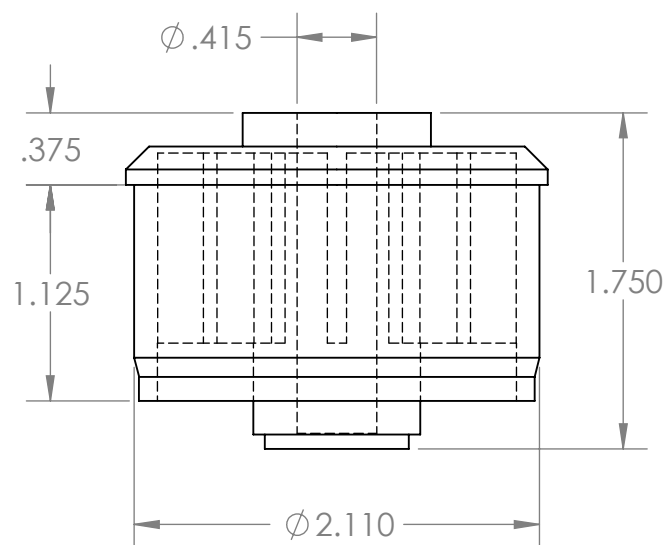
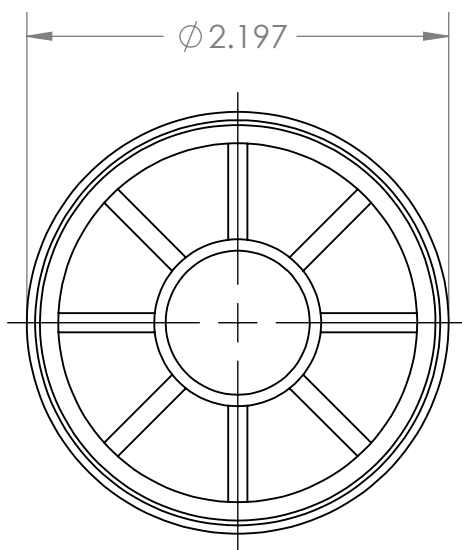


B

B



A

A

**PROPRIETARY AND CONFIDENTIAL**  
THE INFORMATION CONTAINED IN THIS DRAWING IS THE SOLE PROPERTY OF MASON PLASTICS COMPANY. ANY REPRODUCTION IN PART OR AS A WHOLE WITHOUT THE WRITTEN PERMISSION OF MASON PLASTICS COMPANY IS PROHIBITED.

		UNLESS OTHERWISE SPECIFIED:  DIMENSIONS ARE IN INCHES TOLERANCES: ±0.01		NAME	DATE	TITLE:  Roll End Bearing for 2" EMT for 3/8" Shaft Diameter Blind Bore			
			DRAWN	Charles Kirk	11/20/18				
			CHECKED						
			ENG APPR.						
			MFG APPR.						
		INTERPRET GEOMETRIC TOLERANCING PER:  MATERIAL	Q.A.			SIZE <b>A</b>			
			COMMENTS:						
						DWG. NO. MP206738BB		REV	
NEXT ASSY	USED ON	FINISH							
APPLICATION		DO NOT SCALE DRAWING				SCALE: 1:1		WEIGHT:	SHEET 1 OF 1

2

1