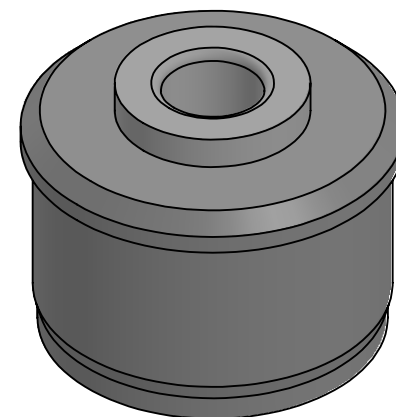
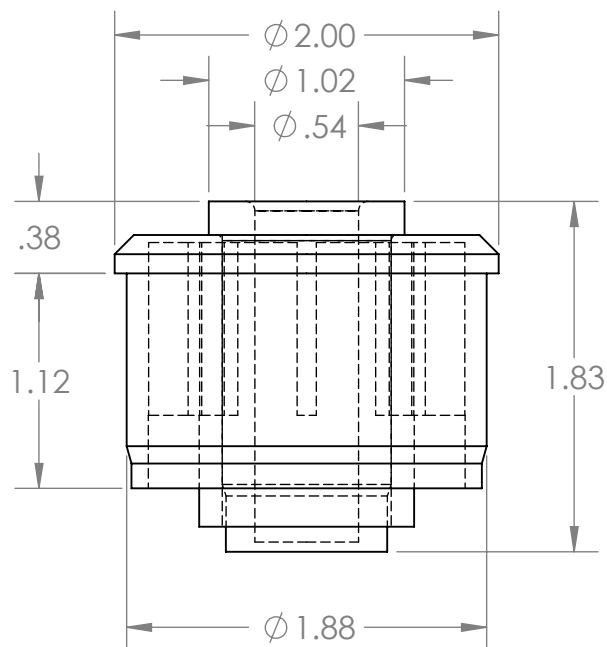
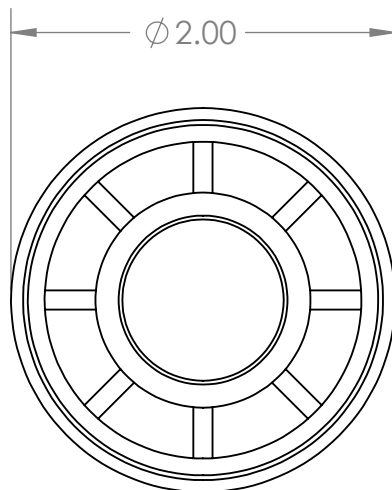


B



B

A

**PROPRIETARY AND CONFIDENTIAL**  
 THE INFORMATION CONTAINED IN THIS  
 DRAWING IS THE SOLE PROPERTY OF  
 MASON PLASTICS COMPANY. ANY  
 REPRODUCTION IN PART OR AS A WHOLE  
 WITHOUT THE WRITTEN PERMISSION OF  
 MASON PLASTICS COMPANY IS  
 PROHIBITED.

		UNLESS OTHERWISE SPECIFIED:  DIMENSIONS ARE IN INCHES TOLERANCES: ±0.01		NAME	DATE	TITLE:  Nylon Roll End for 2" 16 GA Metal Tubing		
			DRAWN	Charles Kirk	12/5/18			
			CHECKED					
			ENG APPR.					
			MFG APPR.					
		INTERPRET GEOMETRIC TOLERANCING PER:	Q.A.			SIZE <b>A</b> DWG. NO. MP2016S12BB REV		
		MATERIAL	COMMENTS:  White UHMW Insert for 1/2" Diameter Axle Blind Bore					
		FINISH						
NEXT ASSY	USED ON							
APPLICATION		DO NOT SCALE DRAWING	SCALE: 1:1 WEIGHT: SHEET 1 OF 1					

A

2

1