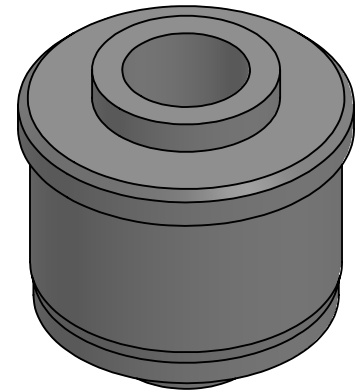
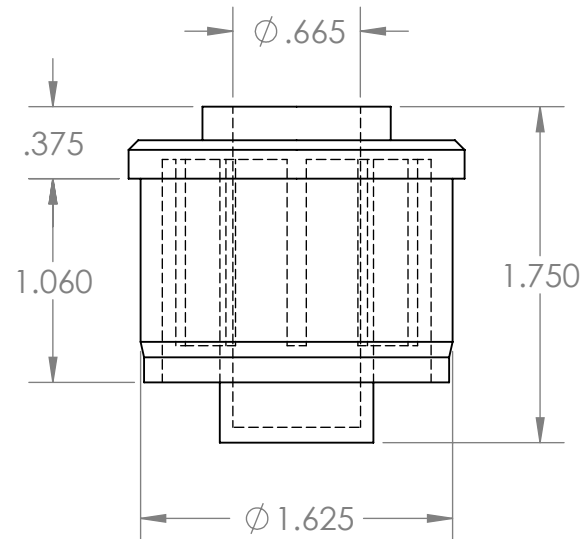
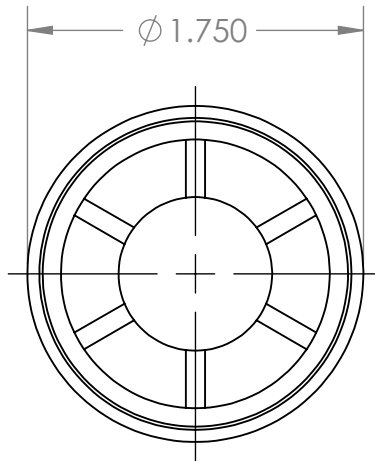


B



B

A

A

PROPRIETARY AND CONFIDENTIAL
THE INFORMATION CONTAINED IN THIS DRAWING IS THE SOLE PROPERTY OF MASON PLASTICS COMPANY. ANY REPRODUCTION IN PART OR AS A WHOLE WITHOUT THE WRITTEN PERMISSION OF MASON PLASTICS COMPANY IS PROHIBITED.

		UNLESS OTHERWISE SPECIFIED:		NAME	DATE	TITLE: Roll End Bearing for 1 3/4" 16 GA for 5/8" Shaft Diameter Blind Bore			
		DIMENSIONS ARE IN INCHES TOLERANCES: ±0.01	DRAWN	Charles Kirk	11/19/18				
			CHECKED						
			ENG APPR.						
			MFG APPR.						
		INTERPRET GEOMETRIC TOLERANCING PER:	Q.A.			SIZE A			
		MATERIAL	COMMENTS:						
		FINISH				DWG. NO.		REV	
NEXT ASSY	USED ON					MP171658BB			
APPLICATION		DO NOT SCALE DRAWING				SCALE: 1:1		WEIGHT:	SHEET 1 OF 1

2

1