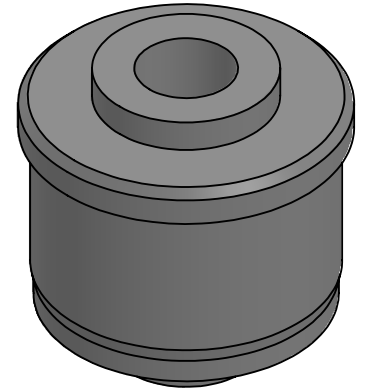
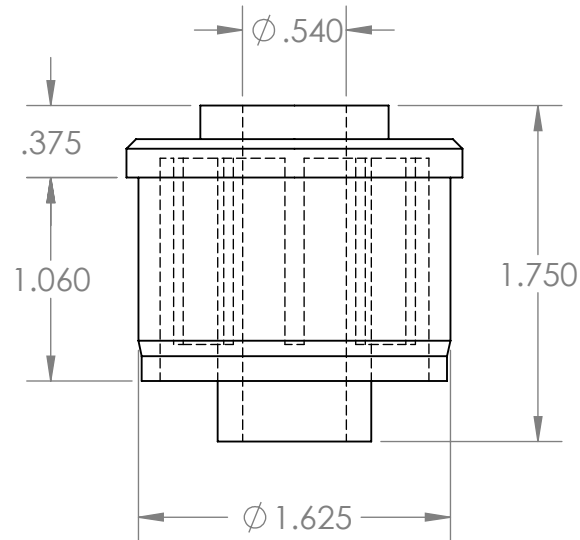
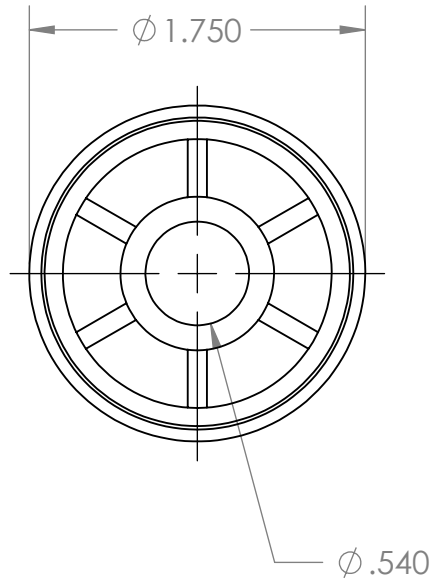


B



B

A

A

PROPRIETARY AND CONFIDENTIAL
THE INFORMATION CONTAINED IN THIS DRAWING IS THE SOLE PROPERTY OF MASON PLASTICS COMPANY. ANY REPRODUCTION IN PART OR AS A WHOLE WITHOUT THE WRITTEN PERMISSION OF MASON PLASTICS COMPANY IS PROHIBITED.

| | | | | | | | | | |
|-------------|---------|-----------------------------------------------|------------|--------------|----------|----------------------------------------------------------------------------------------|--|---------|--------------|
| | | UNLESS OTHERWISE SPECIFIED: | | NAME | DATE | TITLE: Roll End Bearing for 1 3/4" 16 GA for 1/2" Shaft Diameter Through Bore | | | |
| | | DIMENSIONS ARE IN INCHES TOLERANCES: ±0.01 | DRAWN | Charles Kirk | 11/19/18 | | | | |
| | | | CHECKED | | | | | | |
| | | | ENG APPR. | | | | | | |
| | | | MFG APPR. | | | | | | |
| | | INTERPRET GEOMETRIC TOLERANCING PER: | Q.A. | | | SIZE A DWG. NO. MP171612TB REV | | | |
| | | MATERIAL | COMMENTS: | | | | | | |
| | | FINISH | | | | | | | |
| NEXT ASSY | USED ON | | | | | | | | |
| APPLICATION | | DO NOT SCALE DRAWING | SCALE: 1:1 | | | | | WEIGHT: | SHEET 1 OF 1 |

2

1