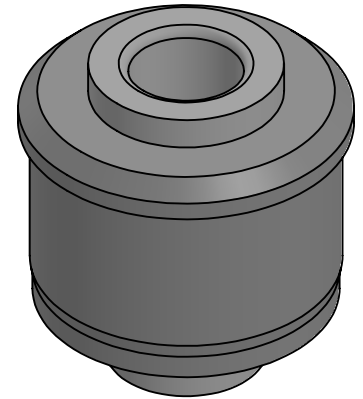
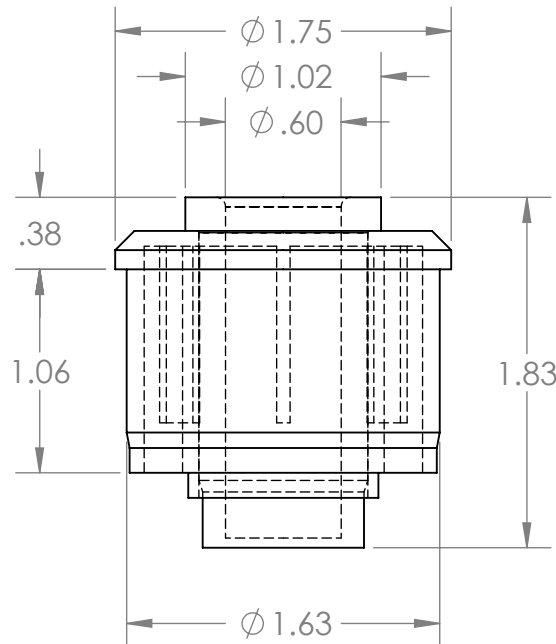
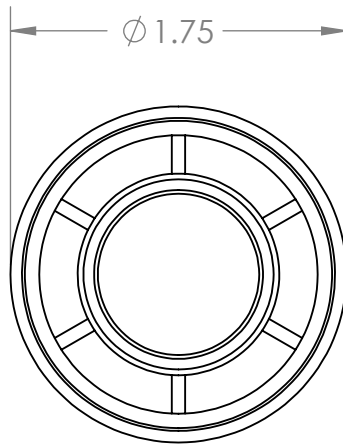


B



B

A

A

PROPRIETARY AND CONFIDENTIAL
THE INFORMATION CONTAINED IN THIS DRAWING IS THE SOLE PROPERTY OF MASON PLASTICS COMPANY. ANY REPRODUCTION IN PART OR AS A WHOLE WITHOUT THE WRITTEN PERMISSION OF MASON PLASTICS COMPANY IS PROHIBITED.

		UNLESS OTHERWISE SPECIFIED:		NAME	DATE	TITLE: Nylon Roll End for 1 1/2" 16 GA Metal Tubing			
		DIMENSIONS ARE IN INCHES TOLERANCES: ±0.01	DRAWN	Charles Kirk	12/5/18				
			CHECKED						
			ENG APPR.						
			MFG APPR.						
		INTERPRET GEOMETRIC TOLERANCING PER:	Q.A.			SIZE A <div>DWG. NO. MP1610S916BB</div> REV			
		MATERIAL	COMMENTS: White UHMW Insert for 9/16" Diameter Axle Blind Bore						
		FINISH							
NEXT ASSY	USED ON								
APPLICATION		DO NOT SCALE DRAWING				SCALE: 1:1		WEIGHT:	SHEET 1 OF 1

2

1