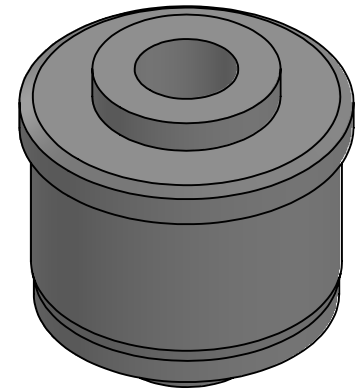
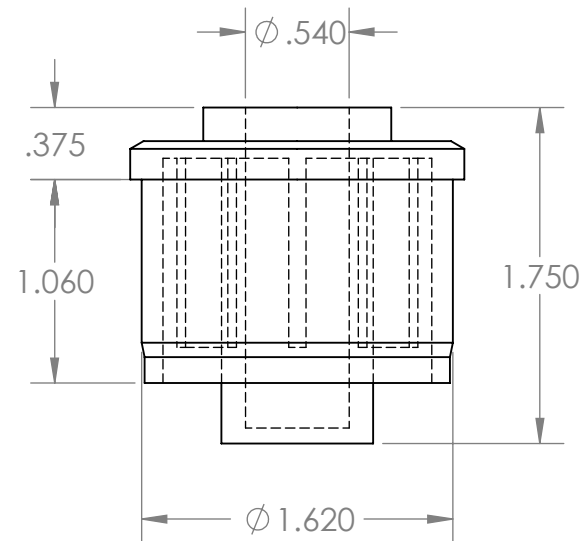
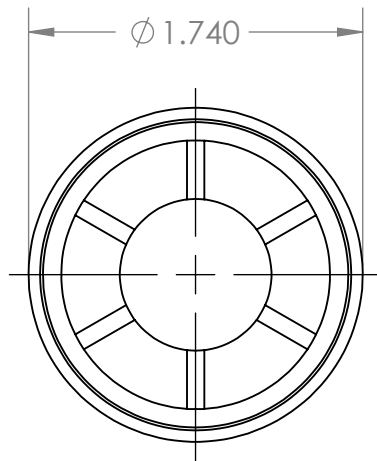


B



B

A

A

PROPRIETARY AND CONFIDENTIAL
THE INFORMATION CONTAINED IN THIS DRAWING IS THE SOLE PROPERTY OF MASON PLASTICS COMPANY. ANY REPRODUCTION IN PART OR AS A WHOLE WITHOUT THE WRITTEN PERMISSION OF MASON PLASTICS COMPANY IS PROHIBITED.

		UNLESS OTHERWISE SPECIFIED:		NAME	DATE	TITLE: Roll End Bearing for 1 1/2" EMT for 1/2" Shaft Diameter Blind Bore		
		DIMENSIONS ARE IN INCHES TOLERANCES: ±0.01	DRAWN	Charles Kirk	11/19/18			
			CHECKED					
			ENG APPR.					
			MFG APPR.					
		INTERPRET GEOMETRIC TOLERANCING PER:	Q.A.			SIZE A DWG. NO. MP161012BB REV		
		MATERIAL	COMMENTS:					
		FINISH						
NEXT ASSY	USED ON							
APPLICATION		DO NOT SCALE DRAWING	SCALE: 1:1 WEIGHT: SHEET 1 OF 1					

2

1