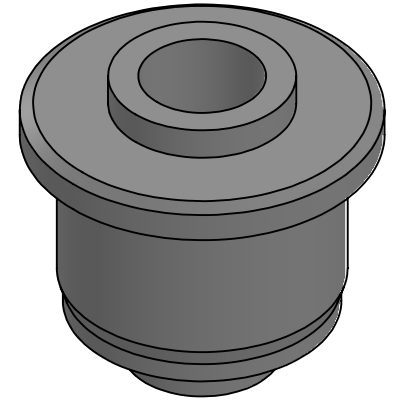
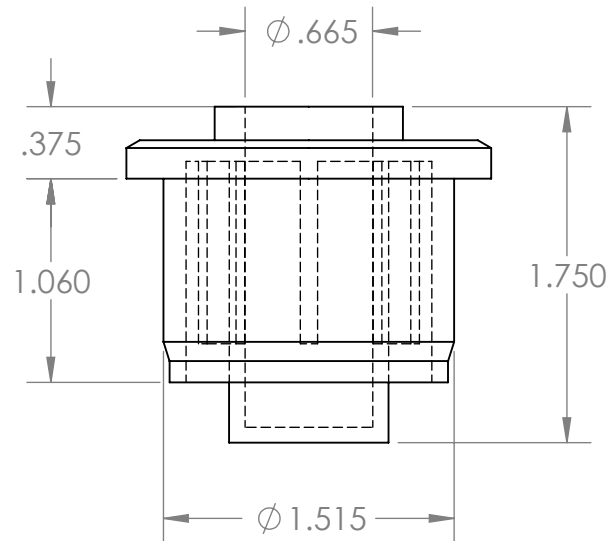
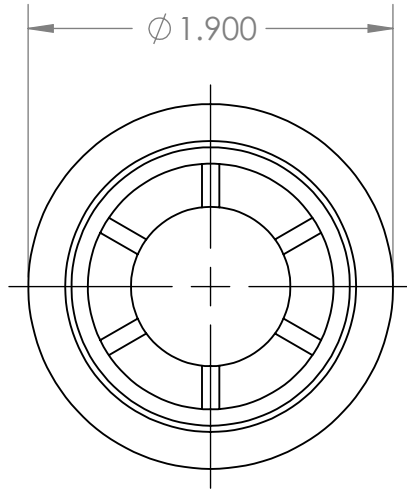


B



B

A

A

**PROPRIETARY AND CONFIDENTIAL**  
THE INFORMATION CONTAINED IN THIS DRAWING IS THE SOLE PROPERTY OF MASON PLASTICS COMPANY. ANY REPRODUCTION IN PART OR AS A WHOLE WITHOUT THE WRITTEN PERMISSION OF MASON PLASTICS COMPANY IS PROHIBITED.

		UNLESS OTHERWISE SPECIFIED:		NAME	DATE	TITLE: Roll End Bearing for 1 1/2" SCH 80 for 5/8" Shaft Diameter Blind Bore			
		DIMENSIONS ARE IN INCHES TOLERANCES: ±0.01	DRAWN	Charles Kirk	11/19/18				
			CHECKED						
			ENG APPR.						
			MFG APPR.						
		INTERPRET GEOMETRIC TOLERANCING PER:	Q.A.			SIZE A DWG. NO. MP158058BB REV			
		MATERIAL	COMMENTS:						
		FINISH							
NEXT ASSY	USED ON								
APPLICATION		DO NOT SCALE DRAWING	SCALE: 1:1					WEIGHT:	SHEET 1 OF 1

2

1