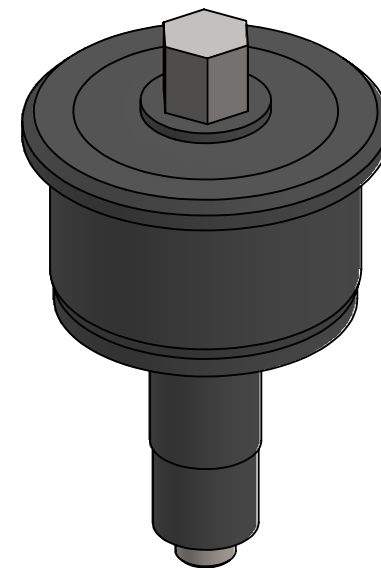
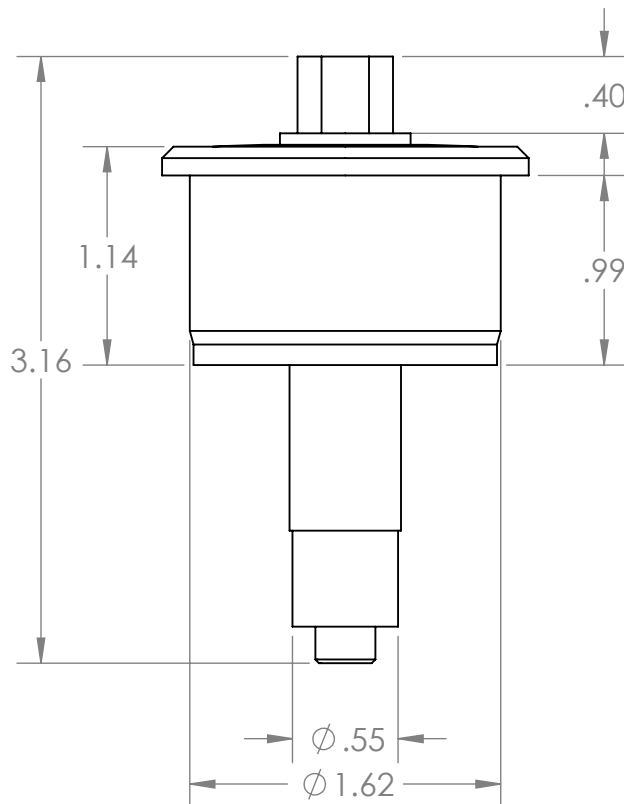
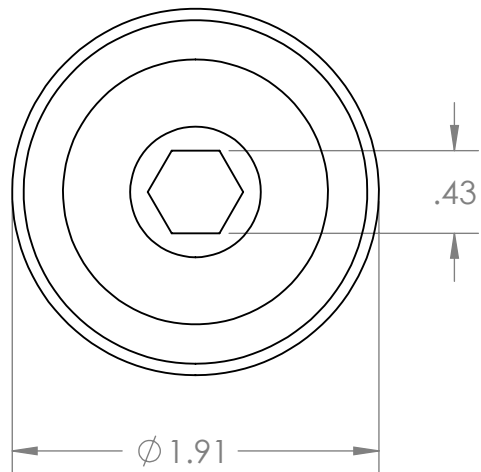


B



B

A

PROPRIETARY AND CONFIDENTIAL
THE INFORMATION CONTAINED IN THIS DRAWING IS THE SOLE PROPERTY OF MASON PLASTICS COMPANY. ANY REPRODUCTION IN PART OR AS A WHOLE WITHOUT THE WRITTEN PERMISSION OF MASON PLASTICS COMPANY IS PROHIBITED.

		UNLESS OTHERWISE SPECIFIED:		NAME	DATE	TITLE: Spring-Loaded Hex Roll End Bearings 7/16" Shaft Diameter			
		DIMENSIONS ARE IN INCHES TOLERANCES: ±0.01	DRAWN	Charles Kirk	1/16/19				
			CHECKED						
			ENG APPR.						
			MFG APPR.						
		INTERPRET GEOMETRIC TOLERANCING PER:	Q.A.			SIZE DWG. NO. REV A MP1540SLR716HSS			
		MATERIAL	COMMENTS:						
		FINISH							
NEXT ASSY	USED ON								
APPLICATION		DO NOT SCALE DRAWING				SCALE: 1:2		WEIGHT:	SHEET 1 OF 1

A

2

1