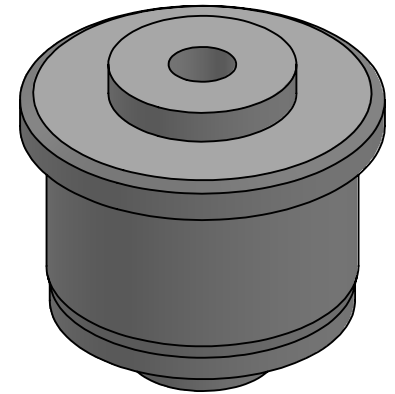
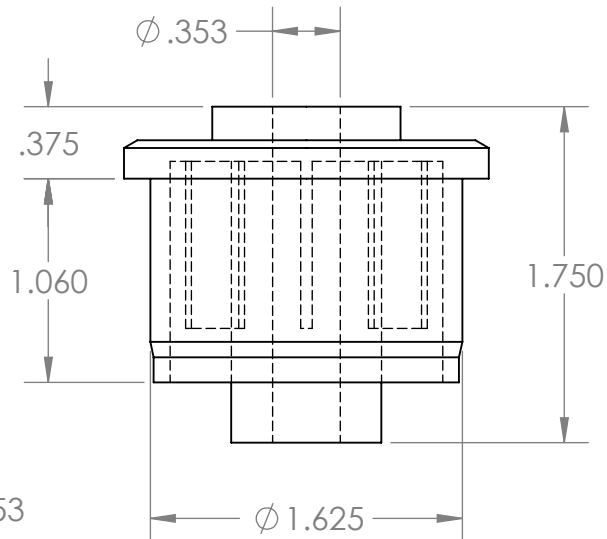
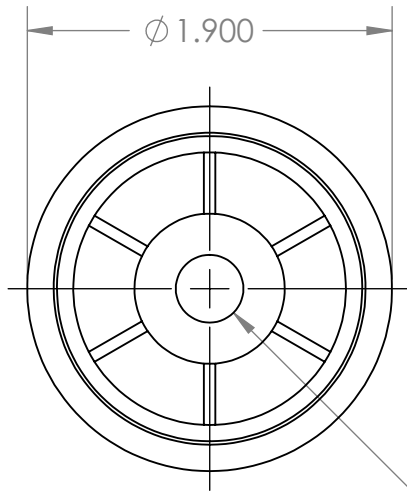


B

B



Ø .353

A

A

PROPRIETARY AND CONFIDENTIAL
THE INFORMATION CONTAINED IN THIS DRAWING IS THE SOLE PROPERTY OF MASON PLASTICS COMPANY. ANY REPRODUCTION IN PART OR AS A WHOLE WITHOUT THE WRITTEN PERMISSION OF MASON PLASTICS COMPANY IS PROHIBITED.

| | | | | | | | | |
|-------------|---------|---|---------------------------------|--------------|---------|--|--|--|
| | | UNLESS OTHERWISE SPECIFIED: | | NAME | DATE | TITLE: Roll End Bearing for 1 1/2" SCH 40 for 5/16" Shaft Diameter Through Bore | | |
| | | DIMENSIONS ARE IN INCHES TOLERANCES: ±0.01 | DRAWN | Charles Kirk | 6/17/19 | | | |
| | | | CHECKED | | | | | |
| | | | ENG APPR. | | | | | |
| | | | MFG APPR. | | | | | |
| | | INTERPRET GEOMETRIC TOLERANCING PER: | Q.A. | | | SIZE A DWG. NO. MP1540516TB REV | | |
| | | MATERIAL | COMMENTS: | | | | | |
| | | FINISH | | | | | | |
| NEXT ASSY | USED ON | | | | | | | |
| APPLICATION | | DO NOT SCALE DRAWING | SCALE: 1:1 WEIGHT: SHEET 1 OF 1 | | | | | |

2

1