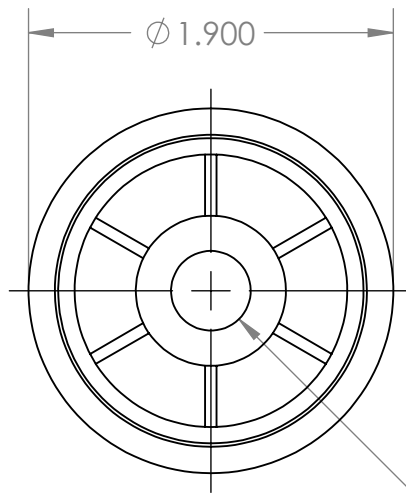
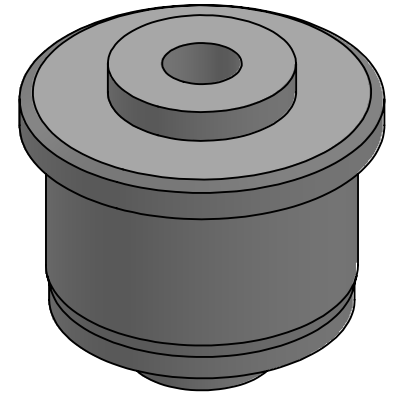
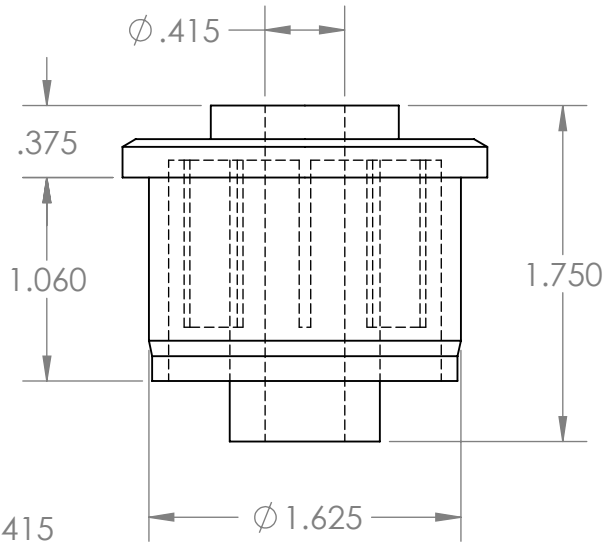


B



Ø .415



B

A

A

PROPRIETARY AND CONFIDENTIAL
THE INFORMATION CONTAINED IN THIS DRAWING IS THE SOLE PROPERTY OF MASON PLASTICS COMPANY. ANY REPRODUCTION IN PART OR AS A WHOLE WITHOUT THE WRITTEN PERMISSION OF MASON PLASTICS COMPANY IS PROHIBITED.

		UNLESS OTHERWISE SPECIFIED:		NAME	DATE	TITLE: Roll End Bearing for 1 1/2" SCH 40 for 3/8" Shaft Diameter Through Bore			
		DIMENSIONS ARE IN INCHES TOLERANCES: ±0.01	DRAWN	Charles Kirk	6/17/19				
			CHECKED						
			ENG APPR.						
			MFG APPR.						
		INTERPRET GEOMETRIC TOLERANCING PER:	Q.A.			SIZE A			
		MATERIAL	COMMENTS:						
		FINISH				DWG. NO. MP154038TB		REV	
NEXT ASSY	USED ON					SCALE: 1:1		WEIGHT:	SHEET 1 OF 1
APPLICATION		DO NOT SCALE DRAWING							

2

1