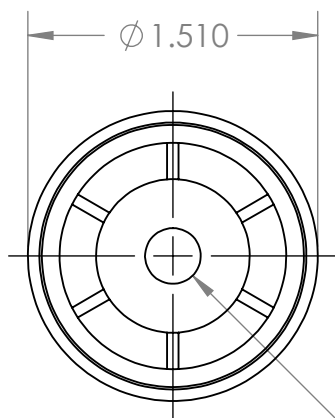
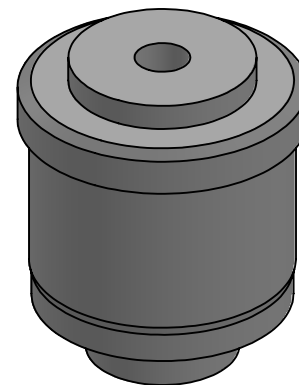
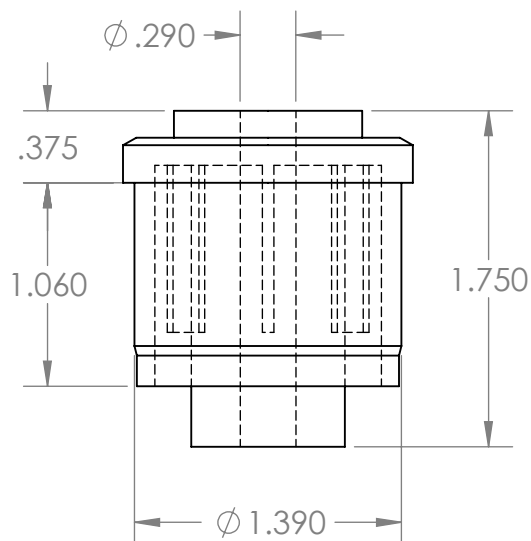


B

 $\phi .290$ 

B

A

PROPRIETARY AND CONFIDENTIAL
THE INFORMATION CONTAINED IN THIS
DRAWING IS THE SOLE PROPERTY OF
MASON PLASTICS COMPANY. ANY
REPRODUCTION IN PART OR AS A WHOLE
WITHOUT THE WRITTEN PERMISSION OF
MASON PLASTICS COMPANY IS
PROHIBITED.

		UNLESS OTHERWISE SPECIFIED: DIMENSIONS ARE IN INCHES TOLERANCES: ±0.01		NAME	DATE	TITLE: Roll End Bearing for 1 1/2" 16 GA for 1/4" Shaft Diameter Through Bore		
			DRAWN	Charles Kirk	6/17/19			
			CHECKED					
			ENG APPR.					
			MFG APPR.					
		INTERPRET GEOMETRIC TOLERANCING PER:	Q.A.			SIZE A DWG. NO. MP151614TB REV		
		MATERIAL	COMMENTS:					
NEXT ASSY	USED ON	FINISH						
APPLICATION		DO NOT SCALE DRAWING				SCALE: 1:1	WEIGHT:	SHEET 1 OF 1

2

1

A