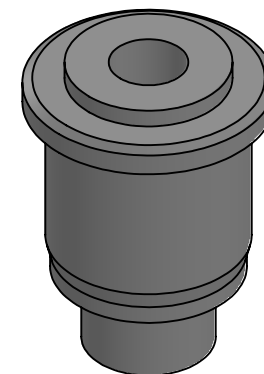
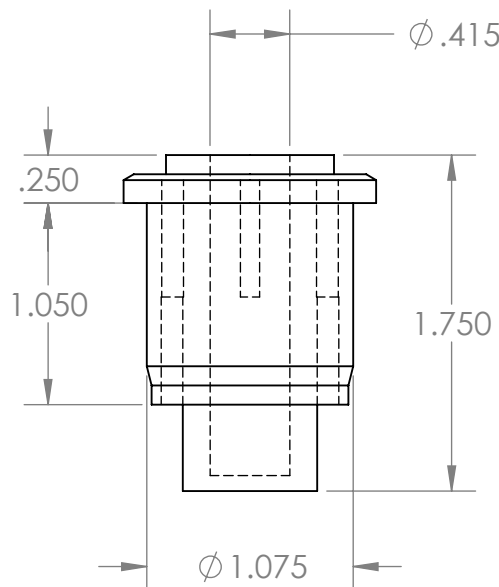
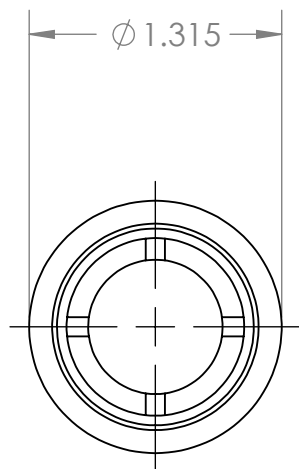


B

A



B

A

**PROPRIETARY AND CONFIDENTIAL**  
THE INFORMATION CONTAINED IN THIS DRAWING IS THE SOLE PROPERTY OF MASON PLASTICS COMPANY. ANY REPRODUCTION IN PART OR AS A WHOLE WITHOUT THE WRITTEN PERMISSION OF MASON PLASTICS COMPANY IS PROHIBITED.

		UNLESS OTHERWISE SPECIFIED:  DIMENSIONS ARE IN INCHES TOLERANCES: ±0.01		NAME	DATE	TITLE:  Roll End Bearing for 1" SCH 40 for 3/8" Shaft Diameter Blind Bore		
			DRAWN	Charles Kirk	11/16/18			
			CHECKED					
			ENG APPR.					
			MFG APPR.					
		INTERPRET GEOMETRIC TOLERANCING PER:	Q.A.			SIZE <b>A</b>		
		MATERIAL	COMMENTS:					
		FINISH						
NEXT ASSY	USED ON					DWG. NO.	MP104038BB	REV
APPLICATION		DO NOT SCALE DRAWING				SCALE: 1:1	WEIGHT:	SHEET 1 OF 1

2

1