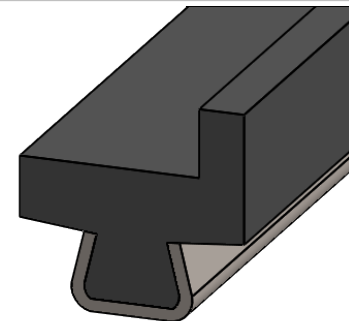
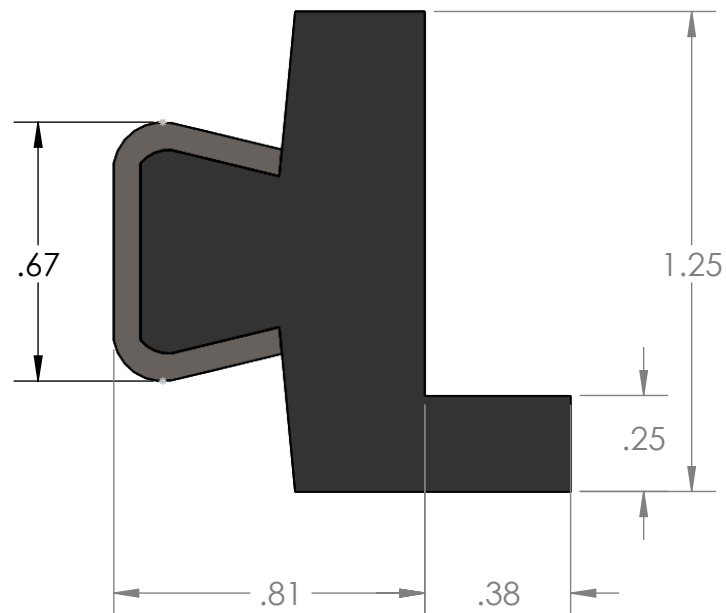


2

1

B

B



A

A

**PROPRIETARY AND CONFIDENTIAL**  
THE INFORMATION CONTAINED IN THIS DRAWING IS THE SOLE PROPERTY OF MASON PLASTICS COMPANY. ANY REPRODUCTION IN PART OR AS A WHOLE WITHOUT THE WRITTEN PERMISSION OF MASON PLASTICS COMPANY IS PROHIBITED.

		UNLESS OTHERWISE SPECIFIED:		NAME	DATE	TITLE:  .38" Lubricated Solid Edge Guide Rail			
		DIMENSIONS ARE IN INCHES TOLERANCES: ±0.01	DRAWN	Charles Kirk	10/10/18				
		INTERPRET GEOMETRIC TOLERANCING PER:	CHECKED						
		MATERIAL	ENG APPR.						
		Wax Filled UHMW-PE/ 304 Stainless Steel	MFG APPR.						
			Q.A.			Meets FDA21CFR 177.1520 Recommended for Food Industry Products			
			COMMENTS:						
						SIZE <b>A</b>	DWG. NO. MPSSLTS1038MS08		REV
NEXT ASSY	USED ON	FINISH 2B				SCALE: 1:8	WEIGHT:	SHEET 1 OF 1	
APPLICATION		DO NOT SCALE DRAWING							

2

1