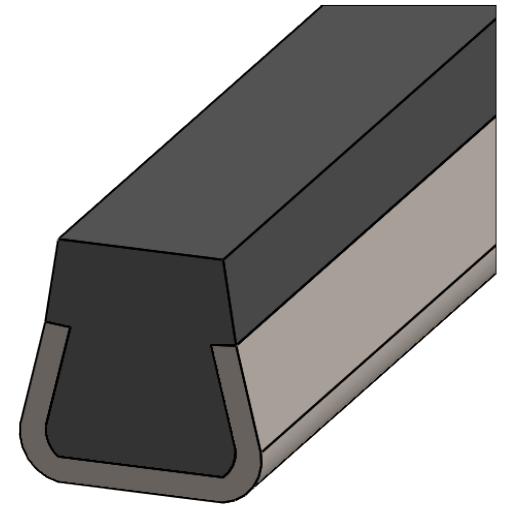
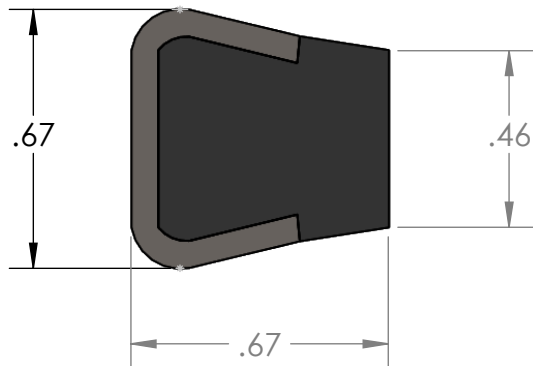


B

B

A

A



PROPRIETARY AND CONFIDENTIAL
THE INFORMATION CONTAINED IN THIS DRAWING IS THE SOLE PROPERTY OF MASON PLASTICS COMPANY. ANY REPRODUCTION IN PART OR AS A WHOLE WITHOUT THE WRITTEN PERMISSION OF MASON PLASTICS COMPANY IS PROHIBITED.

		UNLESS OTHERWISE SPECIFIED:		NAME	DATE	TITLE: Flat Mason Solid Lubricant Rail		
		DIMENSIONS ARE IN INCHES TOLERANCES: ± 0.01	DRAWN	Charles Kirk	9/21/18			
		INTERPRET GEOMETRIC TOLERANCING PER:	CHECKED					
		MATERIAL	ENG APPR.					
		Wax Filled UHMW-PE/ 304 Stainless Steel	MFG APPR.					
			Q.A.			COMMENTS: Meets FDA21CFR 177.1520 Recommended for Food Industry Products		
NEXT ASSY	USED ON	FINISH	2B			SIZE A	DWG. NO. MPSSFSMS20	REV
APPLICATION		DO NOT SCALE DRAWING			SCALE: 1:8		WEIGHT:	SHEET 1 OF 1

2

1