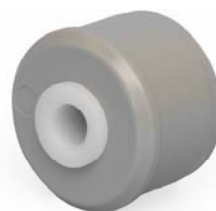
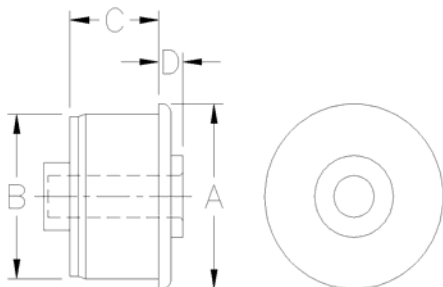


NYLON ROLL ENDS FOR METAL TUBING



Part No.	Tubing O.D. A	Tubing Gauge B	Tubing Wall	Tubing ID	Shaft Insert	Hub
MP-1380S-12-TB	1.51	1 1/4" EMT	.065	1.380	1/2"	3.75
MP-1380S-12-BB	1.51	1 1/4" EMT	.065	1.380	1/2"	3.75
MP-1380S-916-TB	1.51	1 1/4" EMT	.065	1.380	9/16"	3.75
MP-1380S-916-BB	1.51	1 1/4" EMT	.065	1.380	9/16"	3.75
MP-1380S-58-TB	1.51	1 1/4" EMT	.065	1.380	5/8"	3.75
MP-1380S-58-BB	1.51	1 1/4" EMT	.065	1.380	5/8"	3.75
MP-1610S-12-TB	1.75	1 1/2" EMT	.065	1.610	1/2"	3.75
MP-1610S-12-BB	1.75	1 1/2" EMT	.065	1.610	1/2"	3.75
MP-1610S-916-TB	1.75	1 1/2" EMT	.065	1.610	9/16"	3.75
MP-1610S-916-BB	1.75	1 1/2" EMT	.065	1.610	9/16"	3.75
MP-1610S-58-TB	1.75	1 1/2" EMT	.065	1.610	5/8"	3.75
MP-1610S-58-BB	1.75	1 1/2" EMT	.065	1.610	5/8"	3.75
MP-2016S-12-TB	2.00	2" EMT	.065	1.870	1/2"	3.75
MP-2016S-12-BB	2.00	2" EMT	.065	1.870	1/2"	3.75
MP-2016S-916-TB	2.00	2" EMT	.065	1.870	9/16"	3.75
MP-2016S-916-BB	2.00	2" EMT	.065	1.870	9/16"	3.75
MP-2016S-58-TB	2.00	2" EMT	.065	1.870	5/8"	3.75
MP-2016S-58-BB	2.00	2" EMT	.065	1.870	5/8"	3.75
MP-2067S-12-TB	2.197	2" EMT	.065	2.067	1/2"	3.75
MP-2067S-12-BB	2.197	2" EMT	.065	2.067	1/2"	3.75
MP-2067S-916-TB	2.197	2" EMT	.065	2.067	9/16"	3.75
MP-2067S-916-BB	2.197	2" EMT	.065	2.067	9/16"	3.75
MP-2067S-58-TB	2.197	2" EMT	.065	2.067	5/8"	3.75
MP-2067S-58-BB	2.197	2" EMT	.065	2.067	5/8"	3.75
MP-2216S-12-TB	2.250	2 1/4" 16 GA	.065	2.120	1/2"	3.75
MP-2216S-12-BB	2.250	2 1/4" 16 GA	.065	2.120	1/2"	3.75
MP-2216S-916-TB	2.250	2 1/4" 16 GA	.065	2.120	9/16"	3.75
MP-2216S-916-BB	2.250	2 1/4" 16 GA	.065	2.120	9/16"	3.75
MP-2216S-58-TB	2.250	2 1/4" 16 GA	.065	2.120	5/8"	3.75
MP-2216S-58-BB	2.250	2 1/4" 16 GA	.065	2.120	5/8"	3.75

Gray Roller End with white UHMW insert.