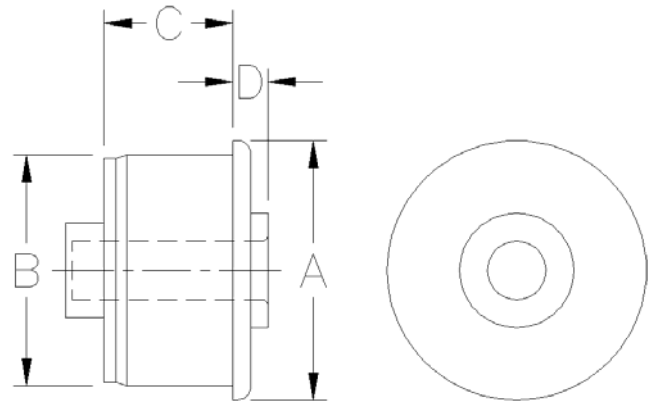


ABS END PLUGS FOR PVC PIPE



Part No.	Tubing Gauge	O.D. A	I.D. B	Tubing Wall	C	D	Shaft Size
MPA-1540-N-12-T	1 1/2" SCH 40	1.900	1.610	.145	1.180	.290	1/2"
MPA-1540-N-12-B	1 1/2" SCH 40	1.900	1.610	.145	1.180	.290	1/2"
MPA-1540-N-916-T	1 1/2" SCH 40	1.900	1.610	.145	1.180	.290	9/16"
MPA-1540-N-916-B	1 1/2" SCH 40	1.900	1.610	.145	1.180	.290	9/16"
MPA-1540-N-58-T	1/12" SCH 40	1.900	1.610	.145	1.180	.290	5/8"
MPA-1540-N-58-B	1 1/2" SCH 40	1.900	1.610	.145	1.180	.290	5/8"
MPA-1540-N-34-T	1 1/2" SCH 40	1.900	1.610	.145	1.180	.290	3/4"
MPA-1540-N-34-B	1 1/2" SCH 40	1.900	1.610	.145	1.180	.290	3/4"
MPA-1580-N-12-T	1 1/2" SCH 80	1.900	1.500	.200	1.180	.290	1/2"
MPA-1580-N-12-B	1 1/2" SCH 80	1.900	1.500	.200	1.180	.290	1/2"
MPA-1580-N-916-T	1/12" SCH 80	1.900	1.500	.200	1.180	.290	9/16"
MPA-1580-N-916-B	1 1/2" SCH 80	1.900	1.500	.200	1.180	.290	9/16"
MPA-1580-N-58-T	1 1/2" SCH 80	1.900	1.500	.200	1.180	.290	5/8"
MPA-1580-N-58-B	1 1/2" SCH 80	1.900	1.500	.200	1.180	.290	5/8"

Bearing Insert: Nylon alloy. The alloy minimizes the swelling of the insert up to .0015 (approximately). For UHMW, replace "N" in the part number with "U."

ABS END PLUGS FOR PVC PIPE

Part No.	Tubing Gauge	O.D. A	I.D. B	Tubing Wall	C	D	Shaft Size
<i>MPA-2040-N-12-T</i>	2" SCH 40	2.375	2.067	.154	1.190	.290	1/2"
MPA-2040-N-12-B	2" SCH 40	2.375	2.067	.154	1.190	.290	1/2"
<i>MPA-2040-N-916-T</i>	2" SCH 40	2.375	2.067	.154	1.190	.290	9/16"
MPA-2040-N-916-B	2" SCH 40	2.375	2.067	.154	1.190	.290	9/16"
<i>MPA-2040-N-58-T</i>	2" SCH 40	2.375	2.067	.154	1.190	.290	5/8"
MPA-2040-N-58-B	2" SCH 40	2.375	2.067	.154	1.190	.290	5/8"
<i>MPA-2040-N-34-T</i>	2" SCH 40	2.375	2.067	.154	1.190	.290	3/4"
MPA-2040-N-34-B	2" SCH 40	2.375	2.067	.154	1.190	.290	3/4"
<i>MPA-2080-N-12-T</i>	2" SCH 80	2.375	1.939	.218	1.190	.290	1/2"
MPA-2080-N-12-B	2" SCH 80	2.375	1.939	.218	1.190	.290	1/2"
<i>MPA-2080-N-916-T</i>	2" SCH 80	2.375	1.939	.218	1.190	.290	9/16"
MPA-2080-N-916-B	2" SCH 80	2.375	1.939	.218	1.190	.290	9/16"
<i>MPA-2080-N-58-T</i>	2" SCH 80	2.375	1.939	.218	1.190	.290	5/8"
MPA-2080-N-58-B	2" SCH 80	2.375	1.939	.218	1.190	.290	5/8"
<i>MPA-2540-N-12-T</i>	2 1/2" SCH 40	2.875	2.469	.203	1.300	.330	1/2"
MPA-2540-N-12B	2 1/2" SCH 40	2.875	2.469	.203	1.300	.330	1/2"
<i>MPA-2540-N-916-T</i>	2 1/2" SCH 40	2.875	2.469	.203	1.300	.330	9/16"
MPA-2540-N-916-B	2 1/2" SCH 40	2.875	2.469	.203	1.300	.330	9/16"
<i>MPA-2540-N-58-T</i>	2 1/2" SCH 40	2.875	2.469	.203	1.300	.330	5/8"
MPA-2540-N-58-B	2 1/2" SCH 40	2.875	2.469	.203	1.300	.330	5/8"
<i>MPA-2540-N-34-T</i>	2 1/2" SCH 40	2.875	2.469	.203	1.300	.330	3/4"
MPA-2540-N-34-B	2 1/2" SCH 40	2.875	2.469	.203	1.300	.330	3/4"

Bearing Insert: Nylon alloy. The alloy minimizes the swelling of the insert up to .0015 (approximately). For UHMW, replace "N" in the part number with "U."